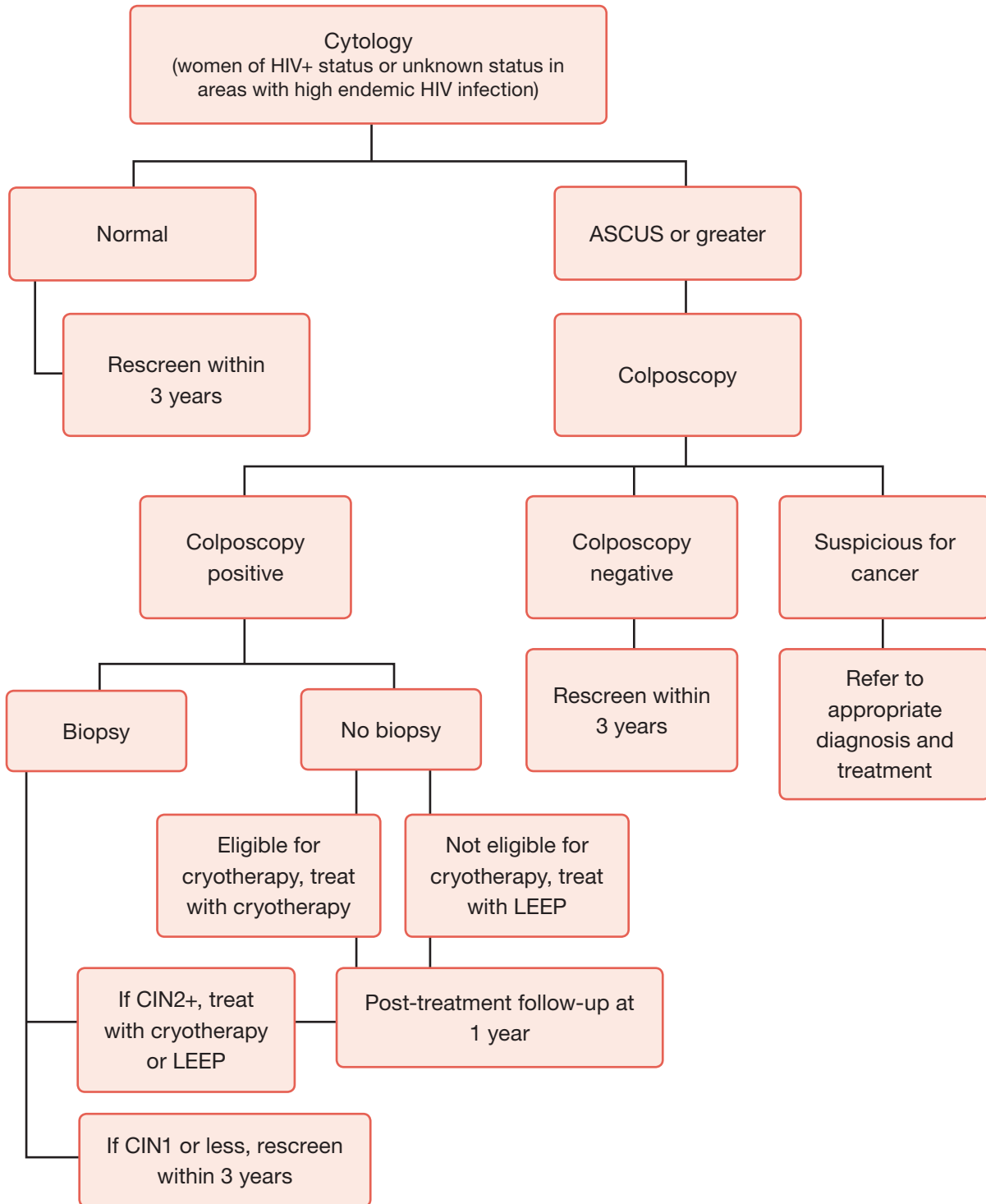


**Screen with cytology followed by colposcopy (with or without biopsy)<sup>1</sup> and treat with cryotherapy or LEEP (when not eligible for cryotherapy)**



Note: Refer to the screen-and-treat recommendations provided in Chapter 3 of the guideline for guidance about which strategies are recommended, and for information on the factors to consider when deciding on a strategy.

<sup>1</sup> Women with positive colposcopic impression can receive biopsy for histological confirmation or be treated immediately.