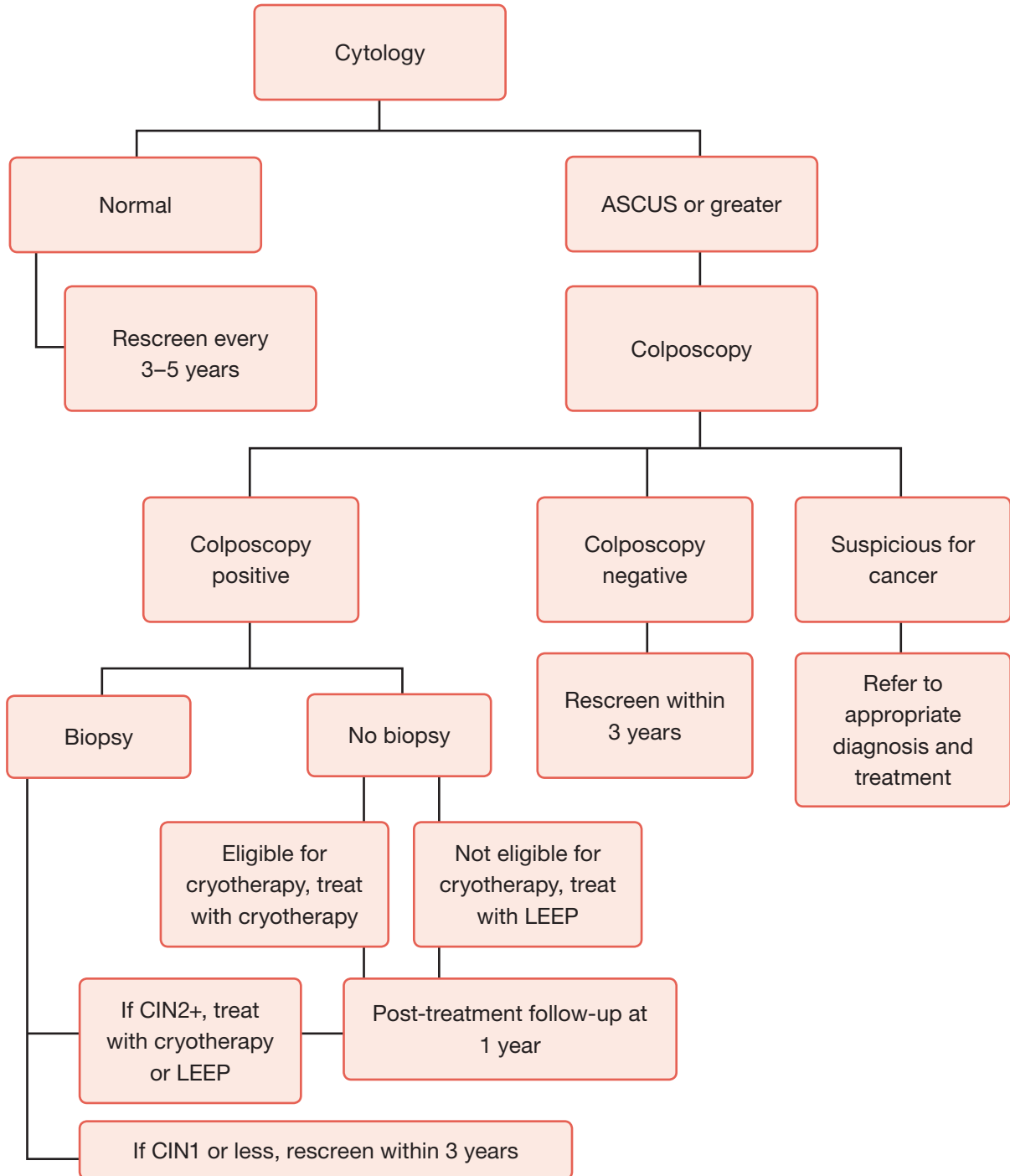


Screen with cytology followed by colposcopy (with or without biopsy)¹ and treat with cryotherapy, or LEEP when not eligible for cryotherapy



Note: Refer to the screen-and-treat recommendations provided in Chapter 3 of the guideline for guidance about which strategies are recommended, and for information on the specific factors to consider when deciding on a strategy.

¹ Women with positive colposcopic impression can receive biopsy for histological confirmation or be treated immediately.