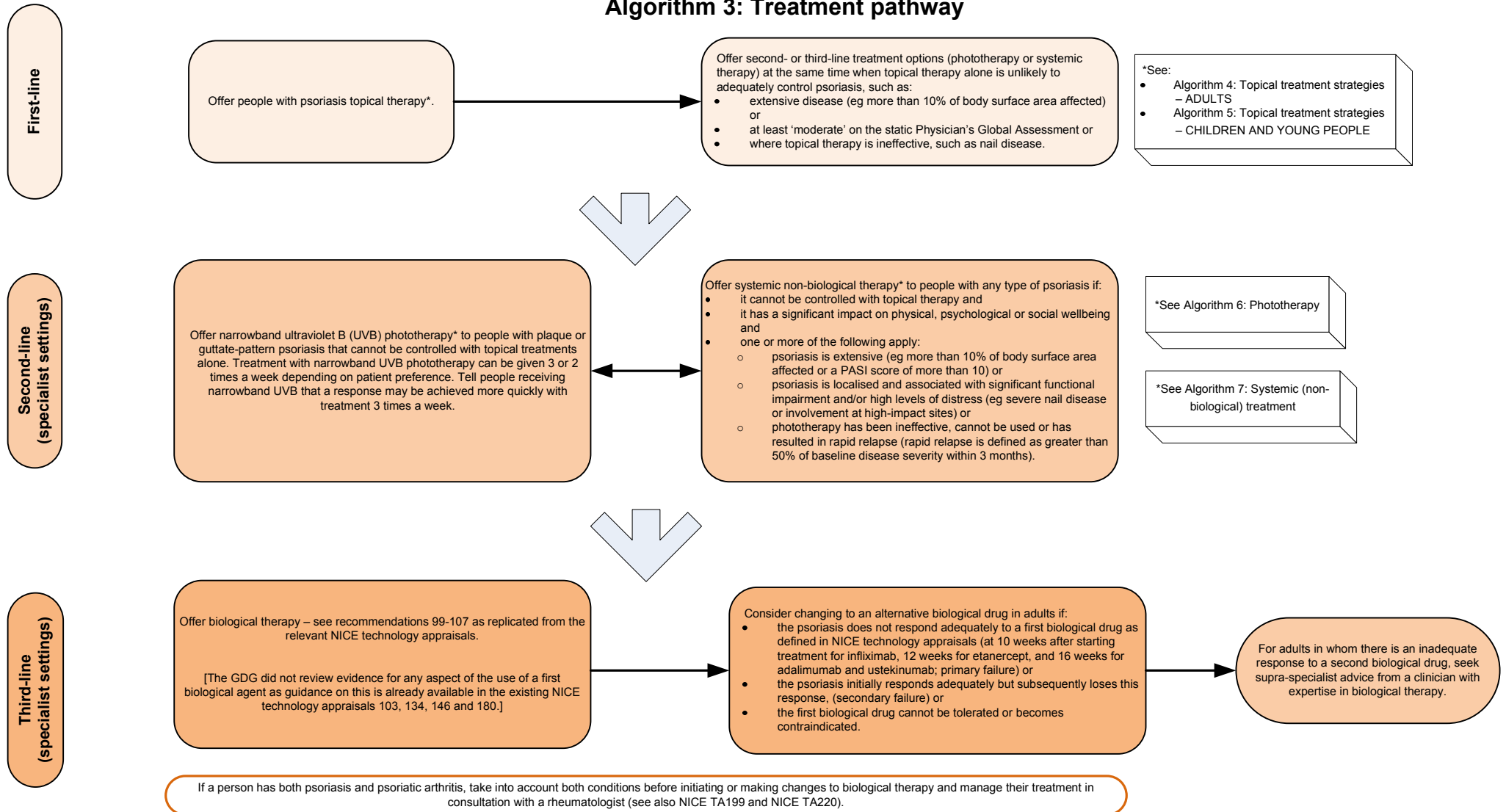


Algorithm 3: Treatment pathway



General points

Patient support and information

- When offering treatments to a person with any type of psoriasis:
- ensure the treatment strategy is developed to meet the person's health goals so that the impact of their condition is minimised and use relevant assessment tools to ensure these goals are met
 - take into account the age and individual circumstances of the person, disease phenotype, severity and impact, co-existing psoriatic arthritis, comorbidities and previous treatment history
 - discuss the risks and benefits of treatment options with the person (and their families or carers). Where possible use absolute risk and natural frequency
 - discuss the importance of adherence to treatment for optimising outcomes.

For more information about involving patients in decisions and supporting adherence see NICE CG76.

Provide a single point of contact to help people with all types of psoriasis (and their families or carers) access appropriate information and advice about their condition and the services available at each stage of the care pathway.

Assess whether people with any type of psoriasis are depressed when assessing disease severity and impact, and when escalating therapy. If appropriate offer information, advice and support in line with NICE CG91 and CG28.