

E.4 Telemonitoring and tele visits vs In person follow up – severe OSAHS

Figure 21: Adherence Hours/day

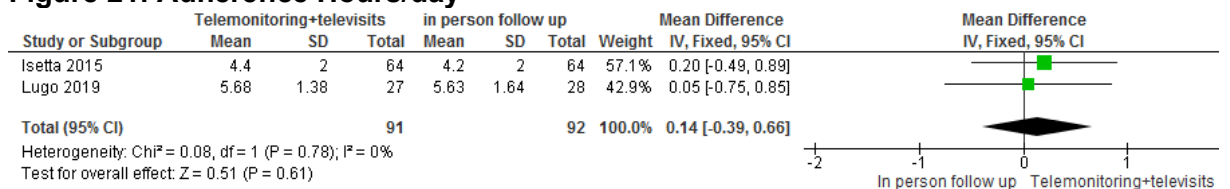
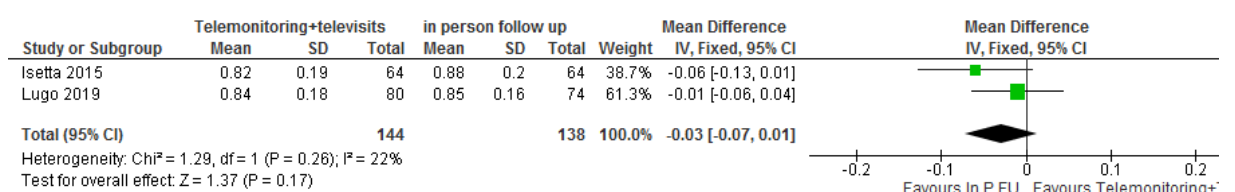


Figure 22: Quality of life – EQ5D¹, 0-1, lower is worse



1. Lugo study reports SD in telemonitoring group as 18, however this appears to be a typo so 0.18 has been used for our analysis

Figure 23: Quality of life – FoSQ 5-20, lower is worse

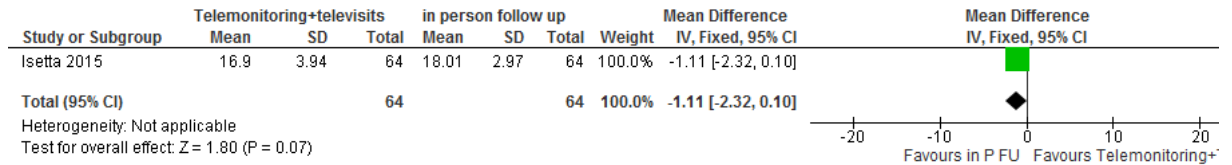


Figure 24: Sleepiness – Epworth scale (ESS), 0-24, higher is worse

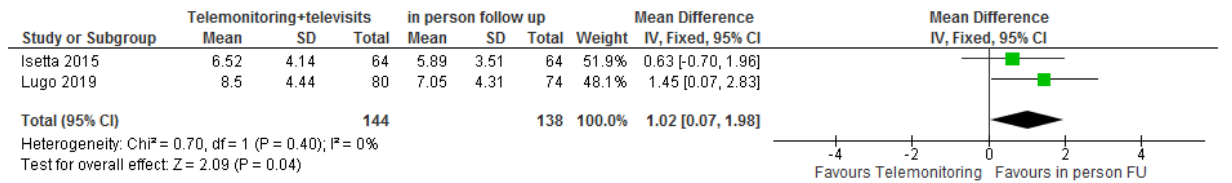


Figure 25: EQ5D – VAS, 0-100, lower is worse

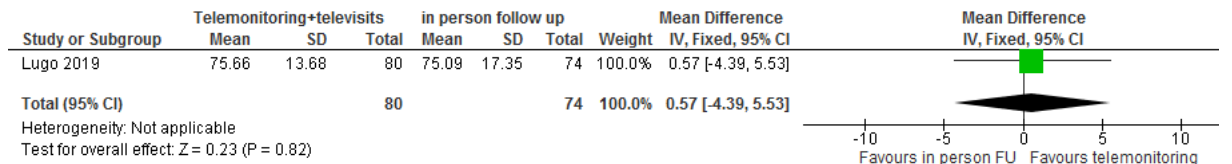


Figure 26: number of OSA related GP visits

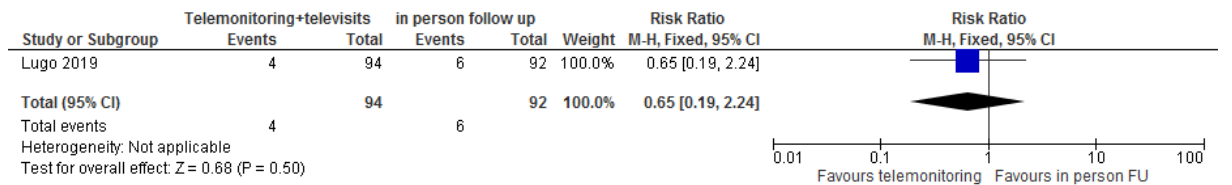


Figure 27: number of OSA related specialist visits

