

10 Central nervous system stimulants (methylphenidate, modafinil, dexamphetamine, lisdexamphetamine) versus placebo

Figure 100: Quality of Life: SF36 physical total at 4-6 weeks (methylphenidate or dexamphetamine)

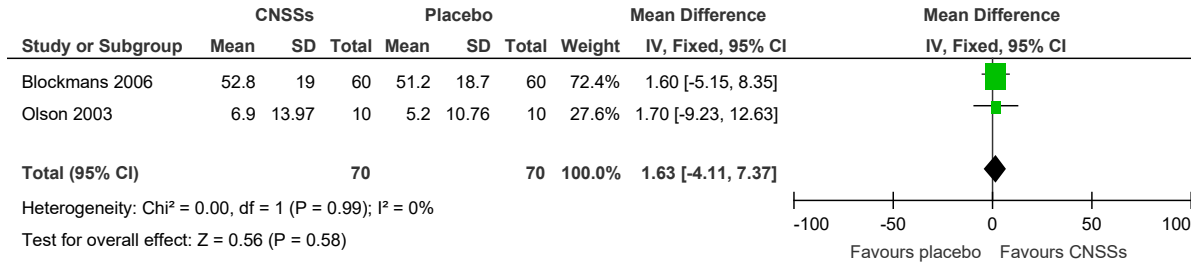


Figure 101: Quality of Life: SF36 mental total at 4-6 weeks (methylphenidate or dexamphetamine)

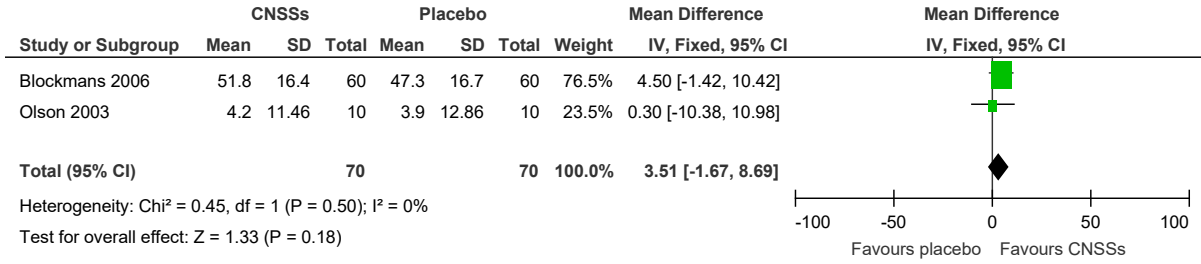


Figure 102: Quality of Life: SF36 at 20 days (modafinil)

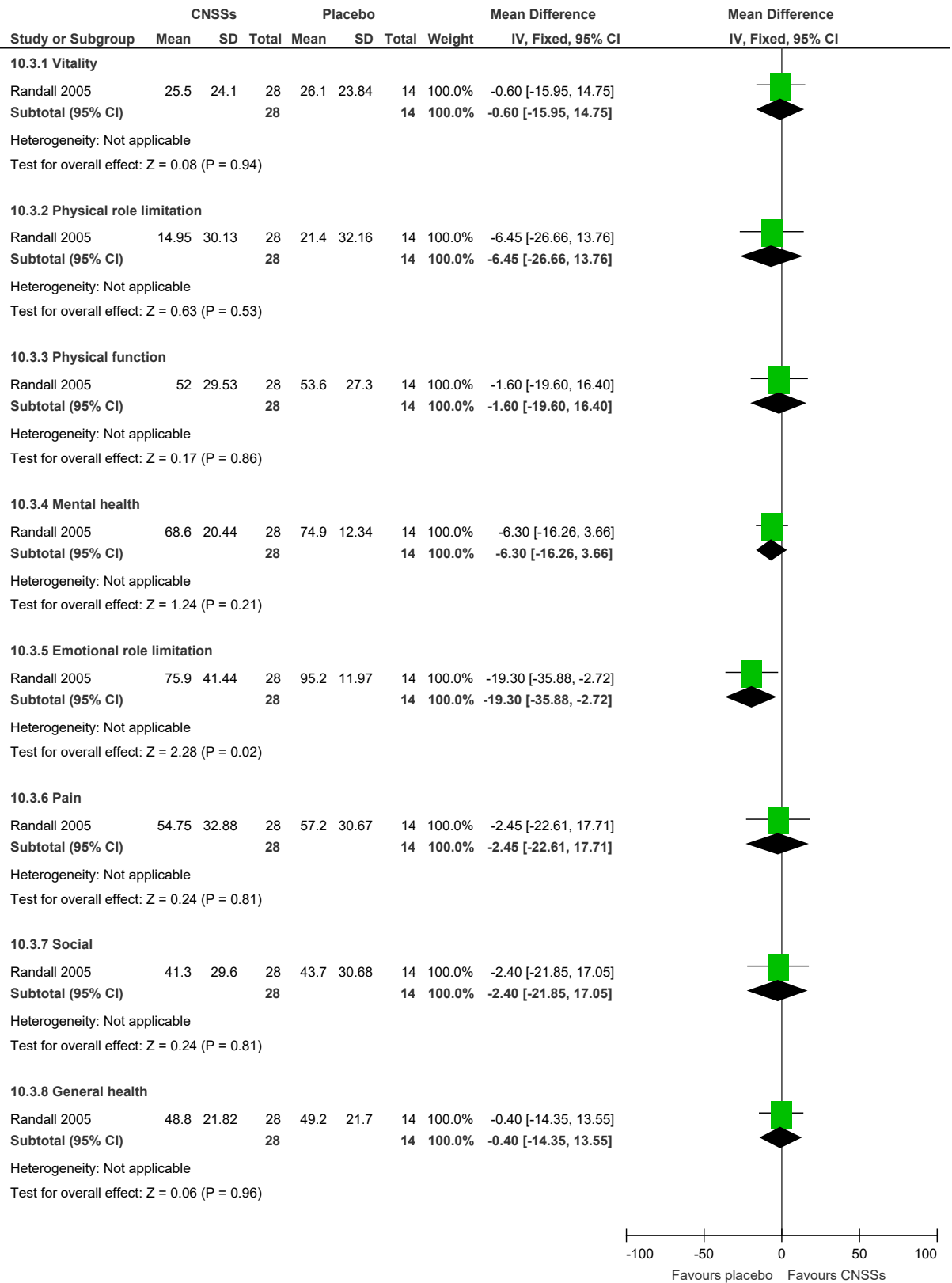


Figure 103: Fatigue: Checklist Individual Strength (CIS) total score at 4-12 weeks (methylphenidate)

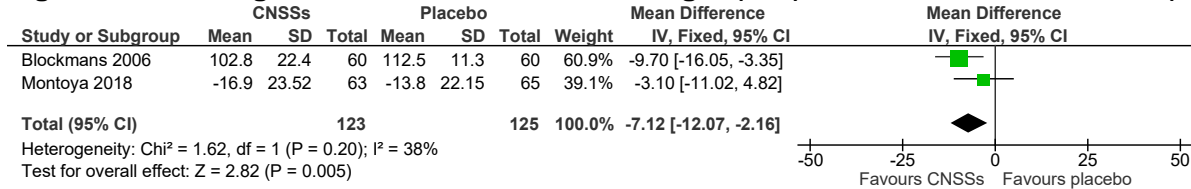


Figure 104: Fatigue: Fatigue Severity Scale at 6 weeks (dexamphetamine or lisdexamphetamine)

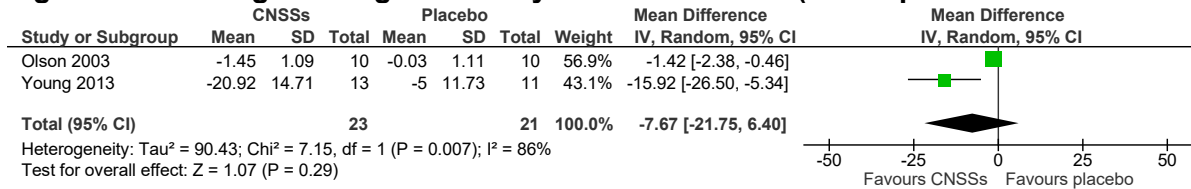


Figure 105: Fatigue: Chalder Physical Fatigue scale at 20 days (modafinil)

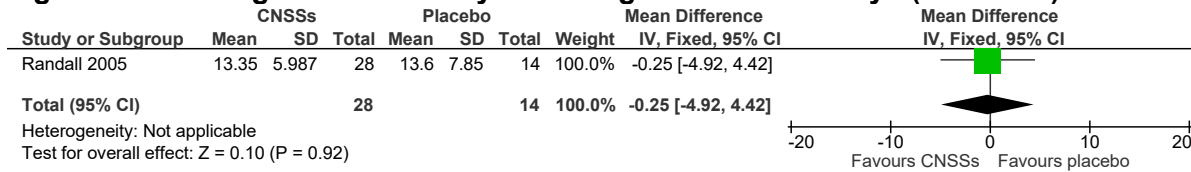


Figure 106: Fatigue: Chalder Mental Fatigue scale at 20 days (modafinil)

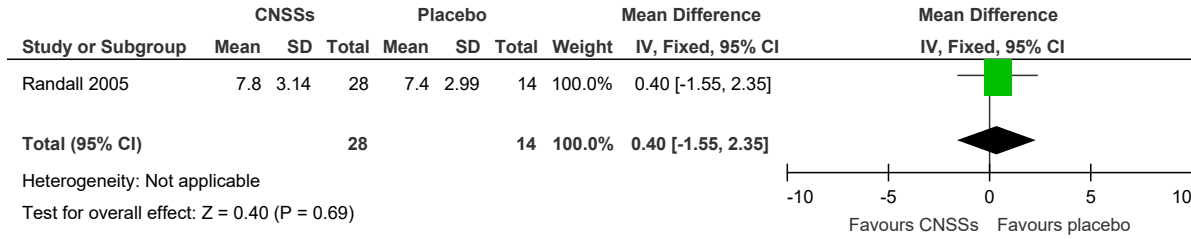


Figure 107: Sleep quality: sleep latency (time taken to fall asleep in mins) at 6 weeks (dexamphetamine)

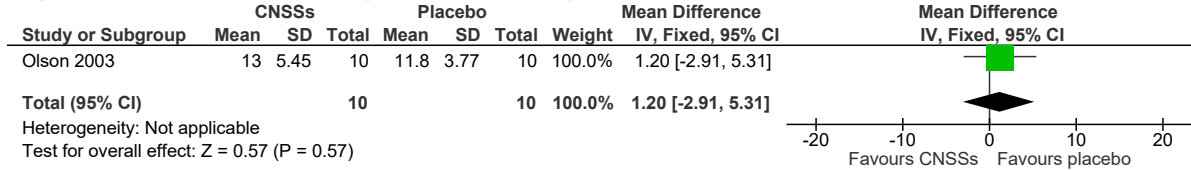


Figure 108: Psychological status: Hospital anxiety and depression scale (HADS) at 4 weeks (methylphenidate)

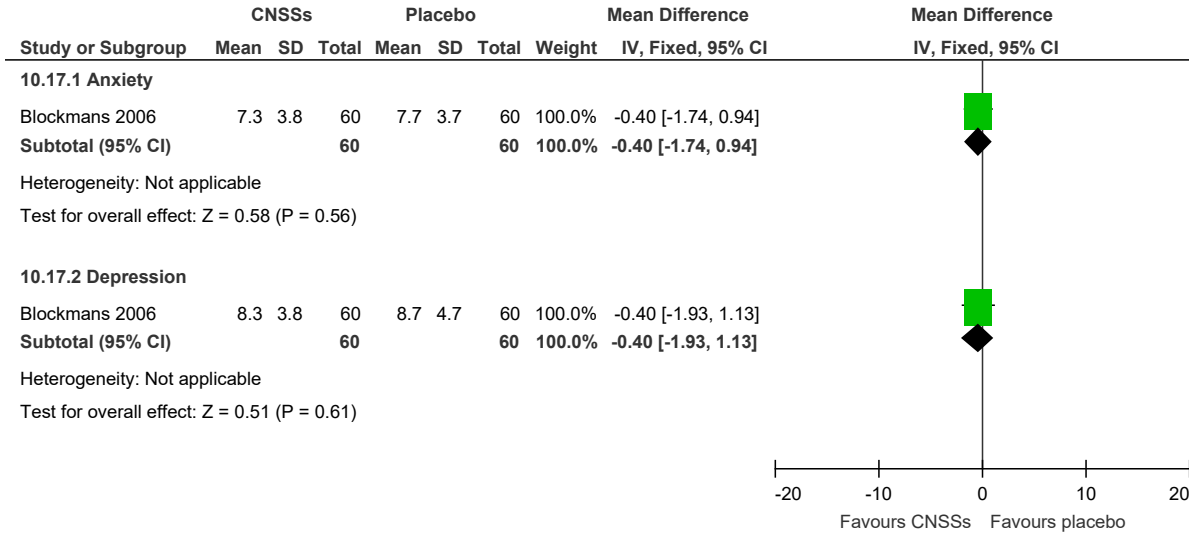


Figure 109: Psychological status: Hamilton Anxiety Scale (improvement) at 6 weeks (lisdexamphetamine)

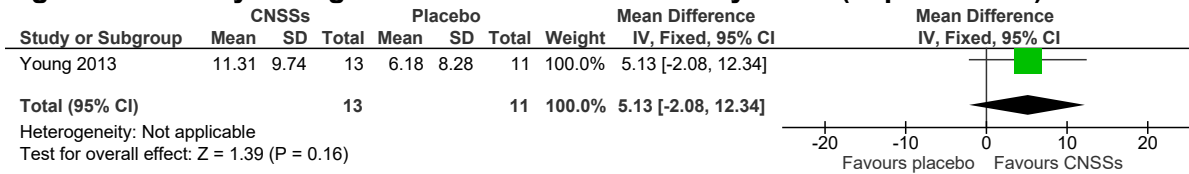


Figure 110: Adverse events: AEs leading to discontinuation (lisdexamphetamine)

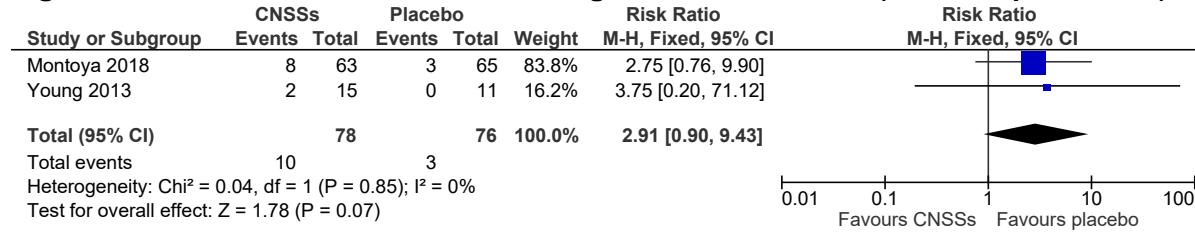


Figure 111: Adverse events: Serious AEs (pyelonephritis) (methylphenidate)

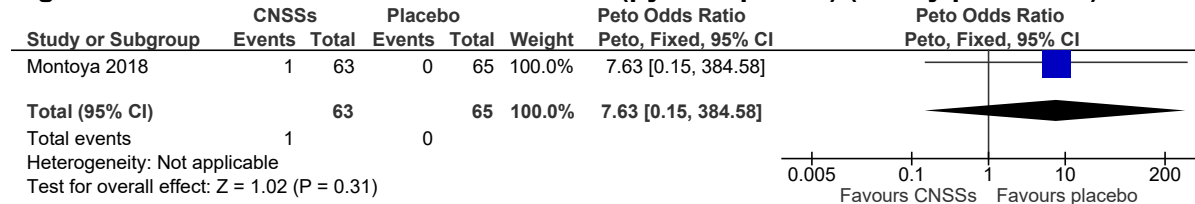


Figure 112: Adverse events: sleepiness (methylphenidate)

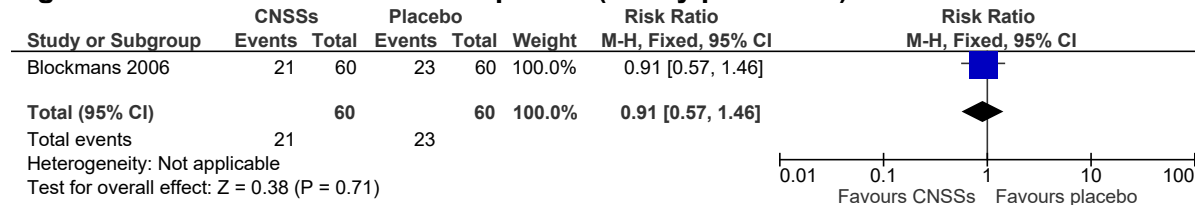


Figure 113: Adverse events: dry mouth (lisdexamphetamine)

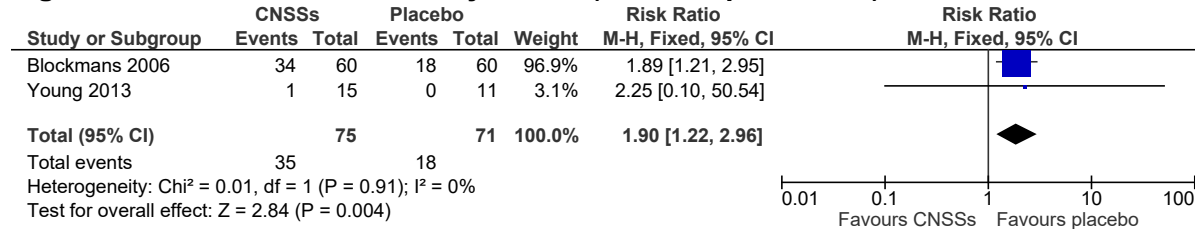


Figure 114: Adverse events: dizziness (methylphenidate)

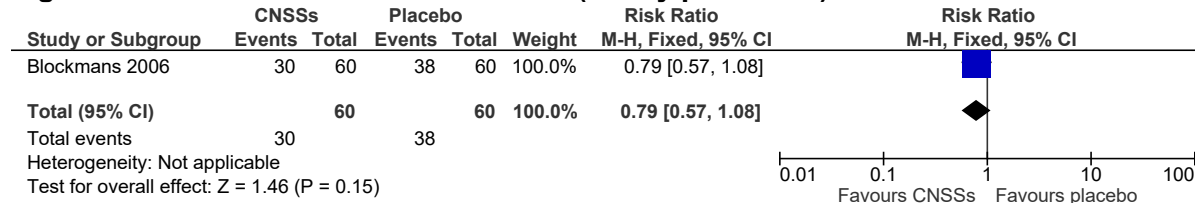


Figure 115: Adverse events: akathisia (methylphenidate)

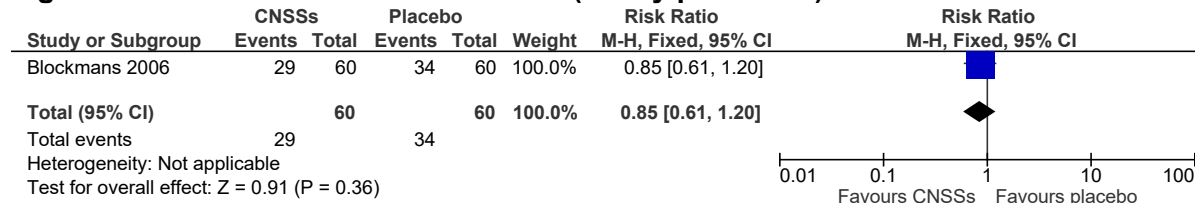


Figure 116: Adverse events: abdominal pain (methylphenidate)

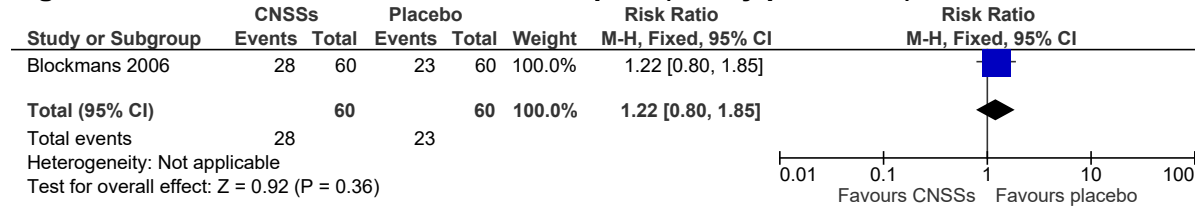


Figure 117: Adverse events: chest pain (methylphenidate)

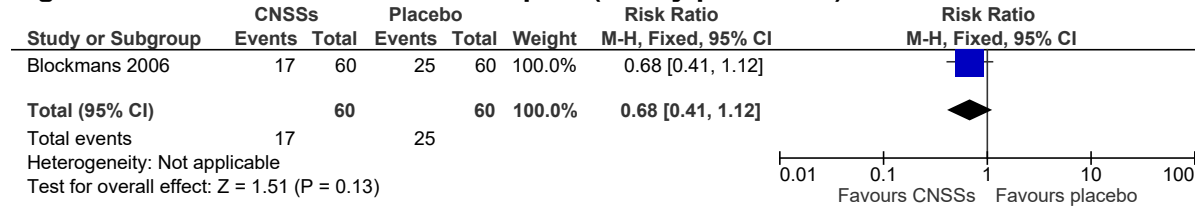


Figure 118: Adverse events: anorexia (lisdexamphetamine)

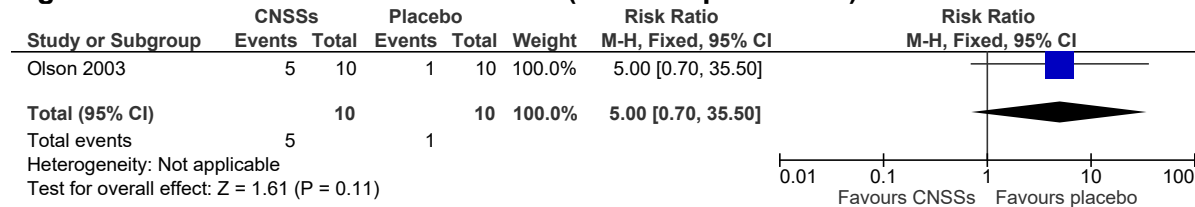


Figure 119: Adverse events: headache (lisdexamphetamine)

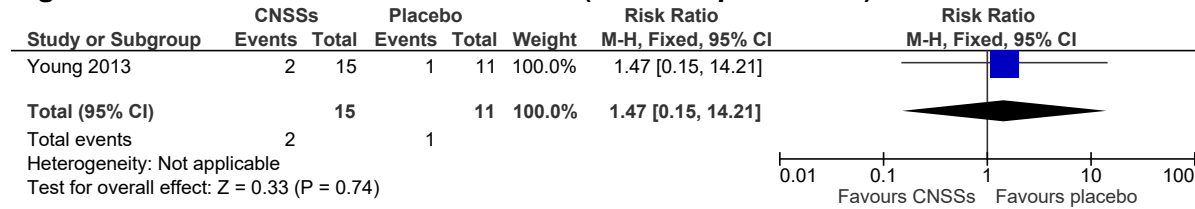


Figure 120: Adverse events: insomnia (lisdexamphetamine)

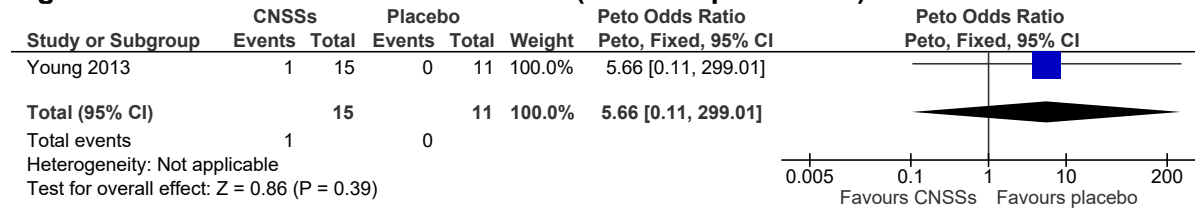


Figure 121: Adverse events (modafinil)

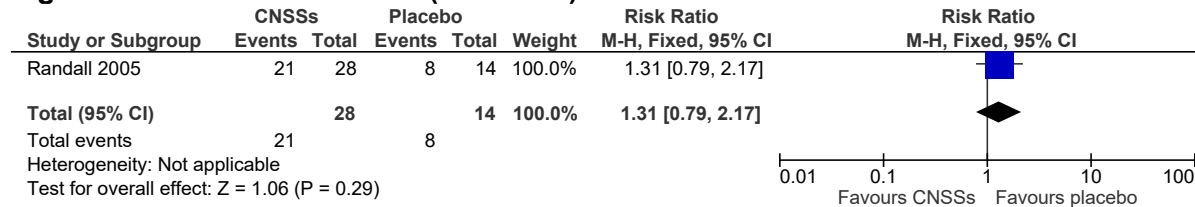


Figure 122: Cognitive function: Behaviour Rating Inventory of Executive Function (BRIEF), global executive composite improvement at 6 weeks (lisdexamphetamine)

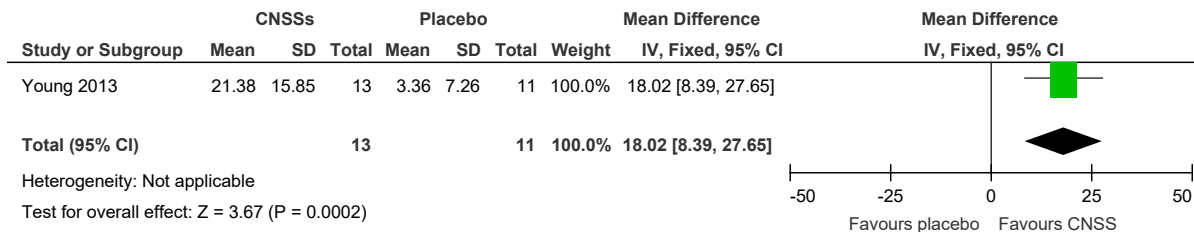


Figure 123: Pain: McGill pain Questionnaire (improvement) at 6 weeks (lisdexamphetamine)

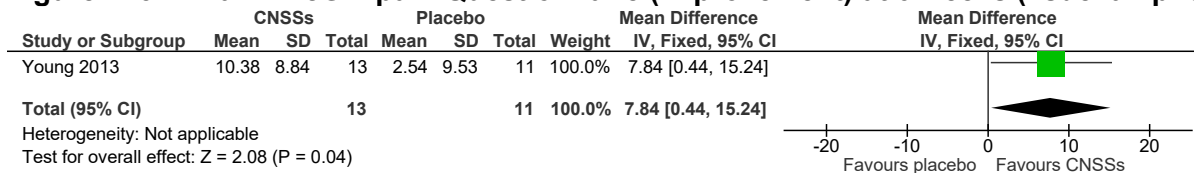


Figure 124: Symptom scales: Clinical Global Improvement – severity (improvement) at 6 weeks (lisdexamphetamine)

