

Study selection for:

D.2a What are the best methods to deliver and coordinate rehabilitation services and social services for adults with complex rehabilitation needs after traumatic injury when they transfer from inpatient to outpatient rehabilitation services?

D.2b What are the best methods to deliver and coordinate rehabilitation services and social services for children and young people with complex rehabilitation needs after traumatic injury when they transfer from inpatient to outpatient rehabilitation services?

A combined search was conducted for both review questions.

Figure 2: Quantitative study selection flow chart: Adults

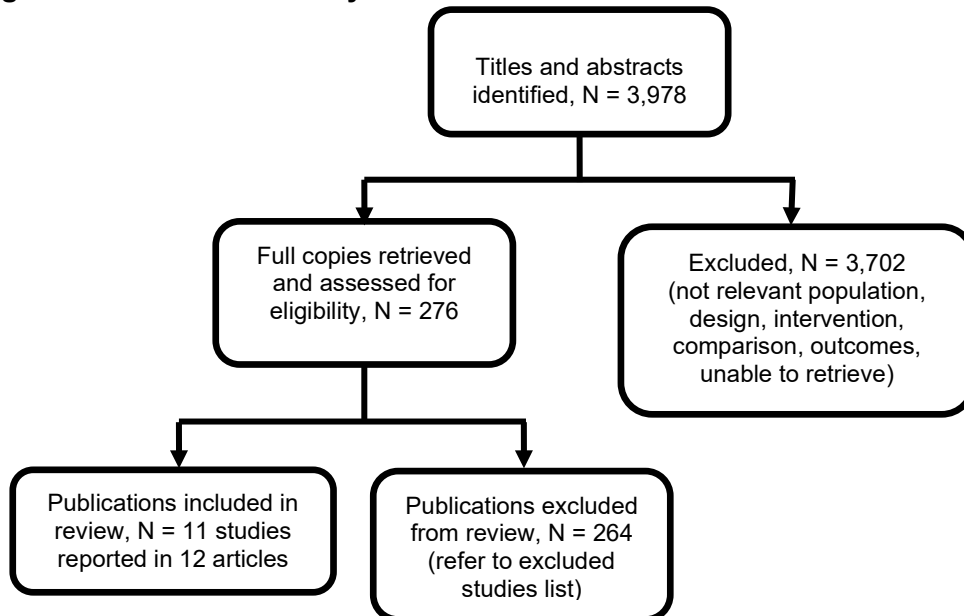


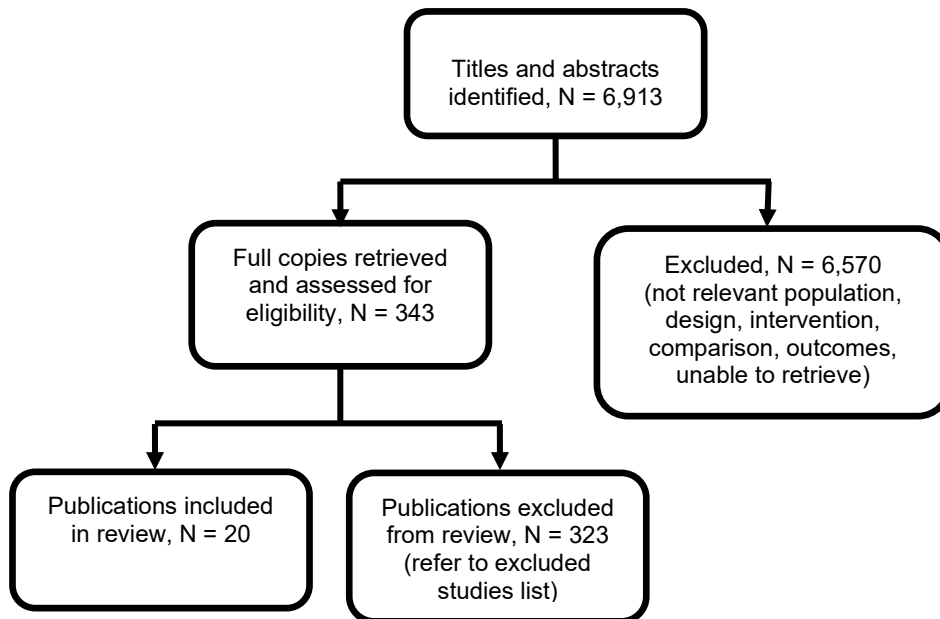
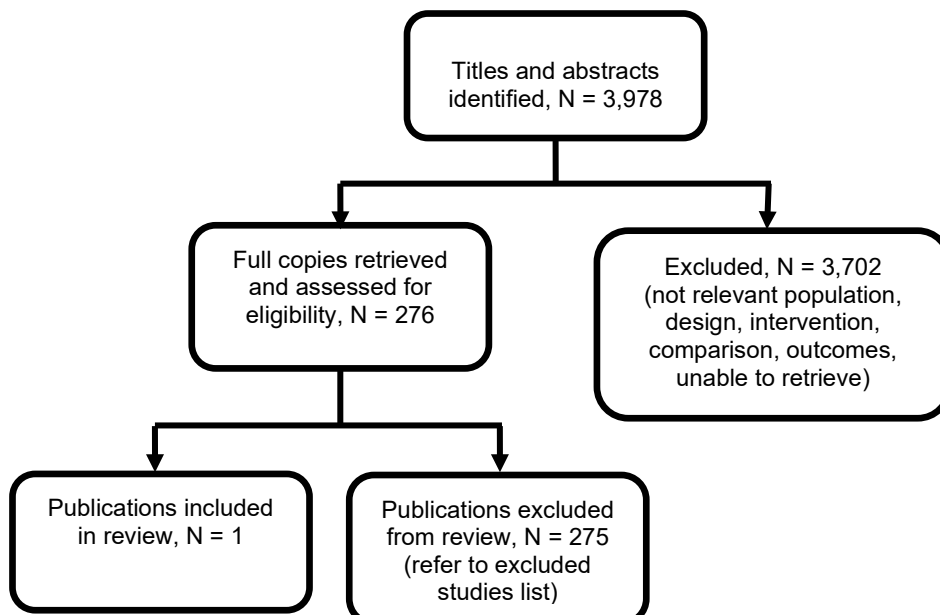
Figure 3: Qualitative study selection flow chart: Adults**Figure 4: Quantitative study selection flow chart: Children and young people**

Figure 5: Qualitative study selection flow chart: Children and young people

