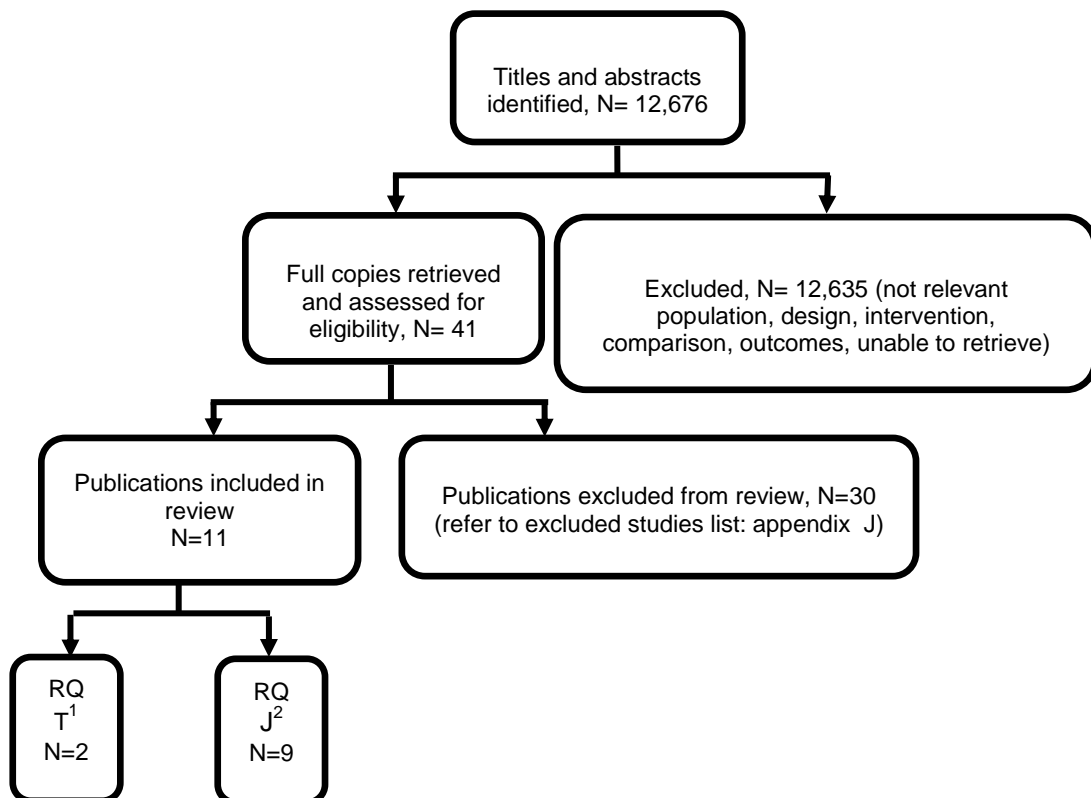


Economic study selection for review question: What are the information and support needs of people who have self-harmed?

A global health economics search was undertaken for all areas covered in the guideline. Figure 3 shows the flow diagram of the selection process for economic evaluations of interventions and strategies associated with the care of people who have self-harmed.

Figure 3: Flow diagram of economic article selection for global health economic search



Abbreviations: RQ: Research question

Notes:

1 What are the most effective models of care for people who have self-harmed?

2 What psychological and psychosocial interventions (including safety plans and electronic health-based interventions) are effective for people who have self-harmed?