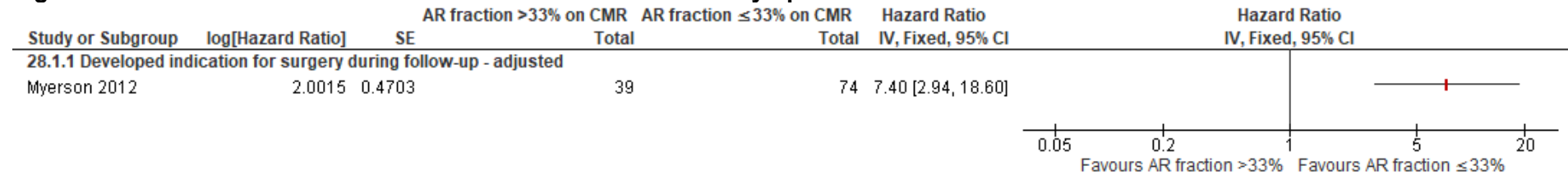
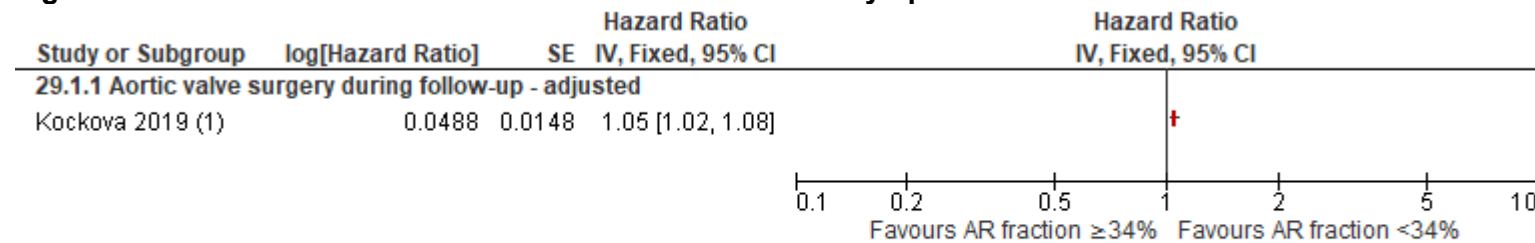


## E.6 Aortic regurgitation

**Figure 31: AR fraction >33% vs ≤33% vs. on cardiac MRI in asymptomatic moderate or severe chronic AR**



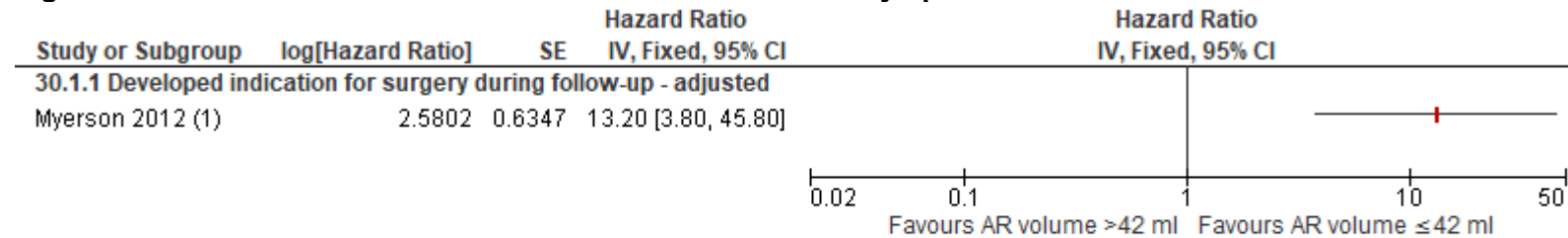
**Figure 32: AR fraction ≥34% vs <34% on cardiac MRI in asymptomatic moderate-severe or severe AR**



Footnotes

(1) Number in each group not reported

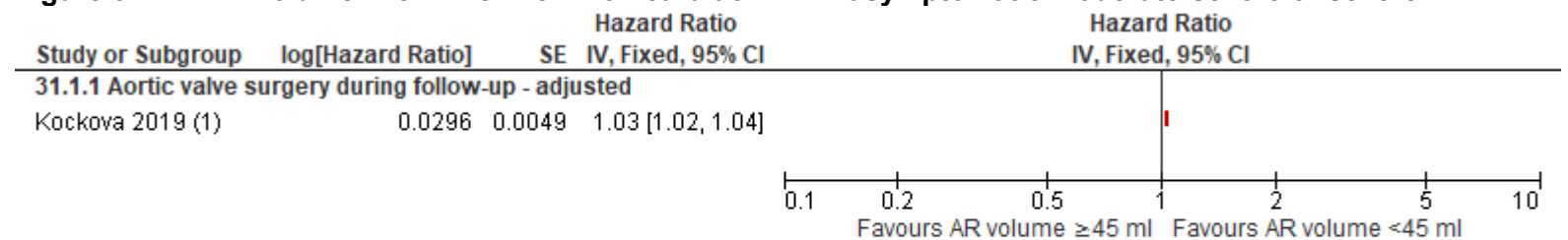
**Figure 33: AR volume >42 ml vs ≤42 ml on cardiac MRI in asymptomatic moderate or severe chronic AR**



Footnotes

(1) Number in each group not reported

**Figure 34: AR volume ≥45 ml vs <45 ml on cardiac MRI in asymptomatic moderate-severe or severe AR**



Footnotes

(1) Number in each group not reported