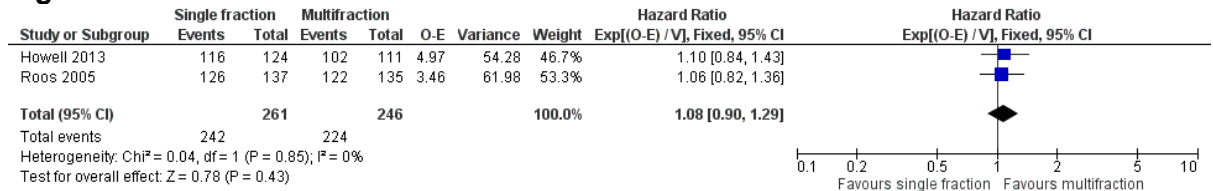


**Forest plots for review question: How effective is radiotherapy, including both fractionated and unfractionated radiotherapy, for the management of spinal metastases, direct malignant infiltration of the spine or associated spinal cord compression?**

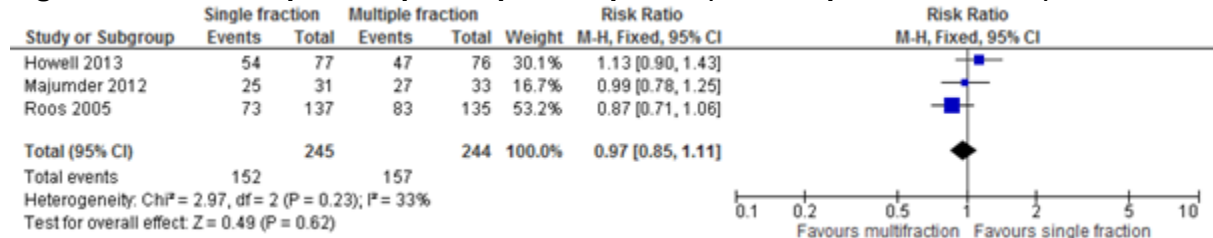
This section includes forest plots only for outcomes that are meta-analysed. Outcomes from single studies are not presented here; the quality assessment for such outcomes is provided in the GRADE profiles in appendix F.

**Comparison 1: Spinal metastases patients - single fraction radiotherapy versus multiple fraction radiotherapy**

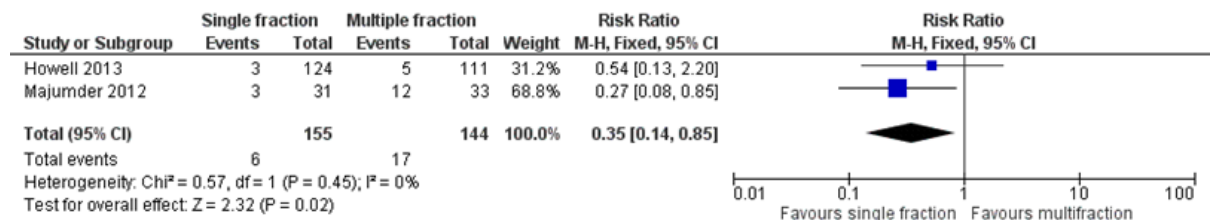
**Figure 2: Overall survival**



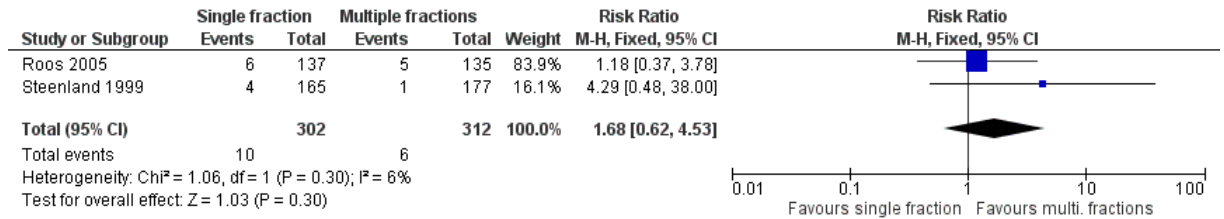
**Figure 3: Pain: Complete or partial pain response (follow-up 1 to 3 months)**



**Figure 4: Treatment related morbidity: Grade 2 to 4 adverse events**



**Figure 5: Spinal stability: Fractures (median follow-up 11 months)**



**Comparison 2: Patients with metastatic spinal cord compression - single fraction radiotherapy versus multiple (or short) fraction radiotherapy**

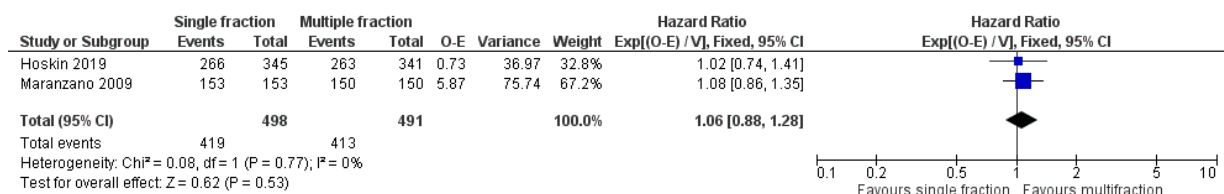
**Figure 6: Neurological and functional status: Ability to walk after treatment**



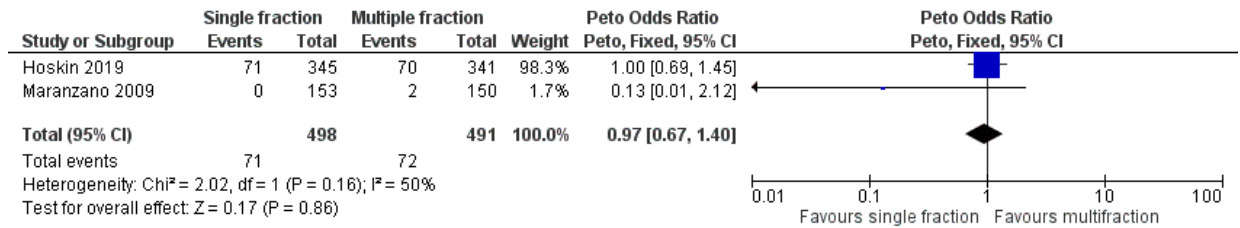
**Figure 7: Neurological and functional status: Normal bowel function after treatment**



**Figure 8: Overall survival**

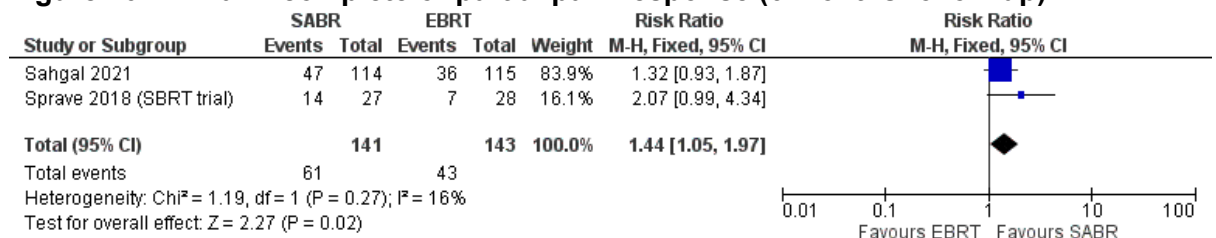


**Figure 9: Treatment related morbidity: Grade 3 or 4 adverse events**



**Comparison 4: Spinal metastases patients – Stereotactic ablative body radiotherapy versus conventional radiotherapy**

**Figure 10: Pain: complete or partial pain response (6 months follow-up)**



**Figure 11: Spinal stability: vertebral compression fracture of any grade - 6 months**

