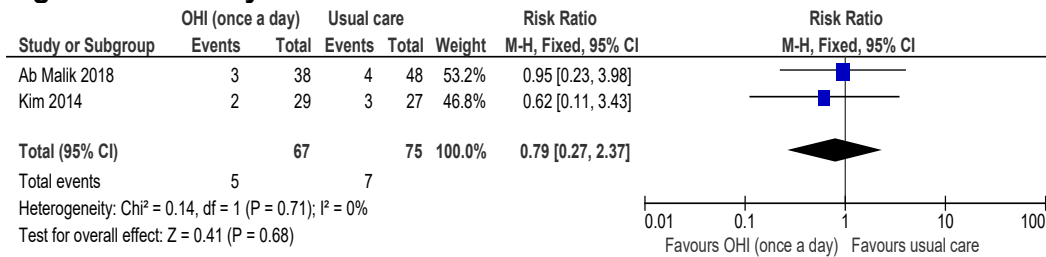
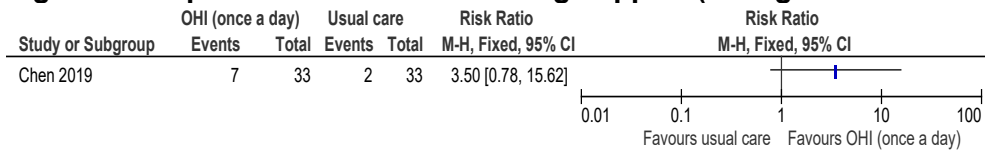


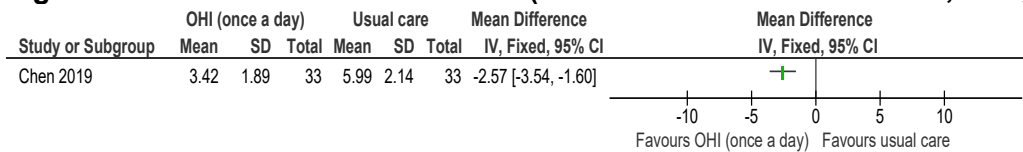
**Figure 2: Mortality at ≤3 months**



**Figure 3: Requirement of enteral feeding support (nasogastric tube removal) at ≤3 months**

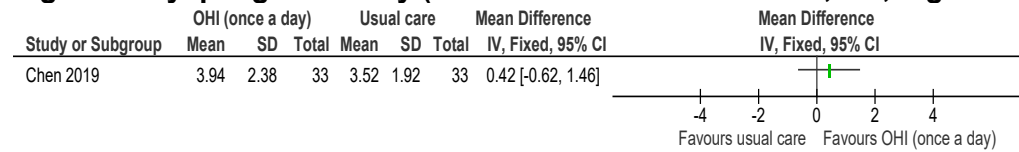


**Figure 4: Oral health outcome scales (Oral Health Assessment Tool, 0-16, lower values are better, final value) at ≤3 months**



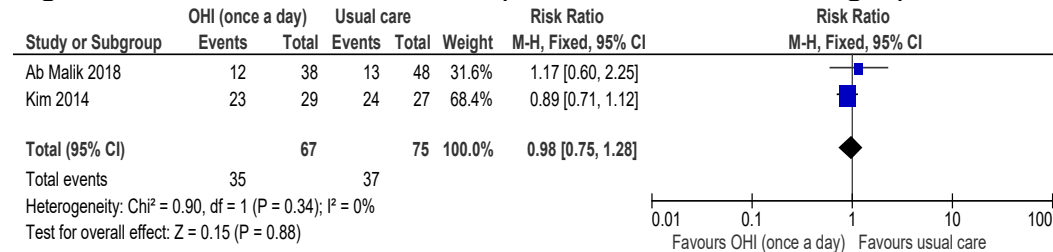
Notes: Oral health intervention (once a day): 5.64 (2.54). Usual care: 5.24 (1.77).

**Figure 5: Dysphagia severity (Functional Oral Intake Scale, 1-7, higher values are better, final value) at ≤3 months**

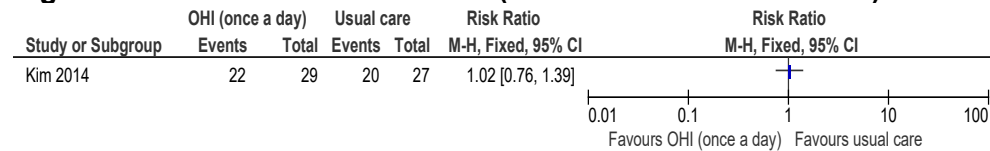


Notes: Oral health intervention (once a day): 3.15 (2.06). Usual care: 3.15 (1.79).

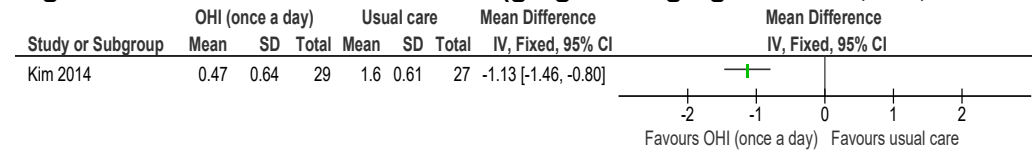
**Figure 6: Presence of oral disease (oral candidiasis - on tongue) at ≤3 months**



**Figure 7: Presence of oral disease (oral candidiasis - in saliva) at ≤3 months**



**Figure 8: Presence of oral disease (gingivitis - gingival index, 0-3, lower values are better, final value) at ≤3 months**



Notes: Baseline oral hygiene intervention (once a day): 1.54 (0.47). Baseline usual care: 1.3 (0.53).

**Figure 9: Length of hospital stay (length of ICU admission, days, lower values are better) at ≤3 months**

