

Figure 10: Mortality at ≤3 months

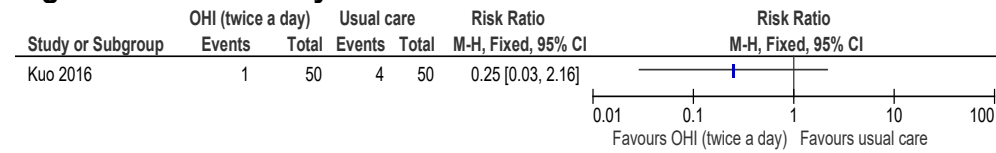


Figure 11: Occurrence of pneumonia at ≤3 months

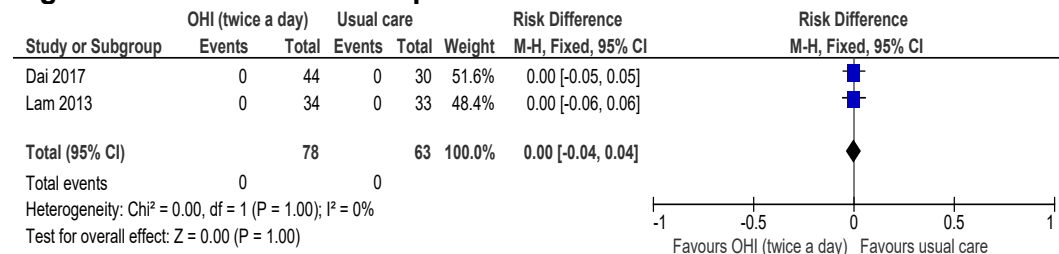


Figure 12: Requiring enteral feeding support (FOIS 1-3 at end of trial) at ≤3 months

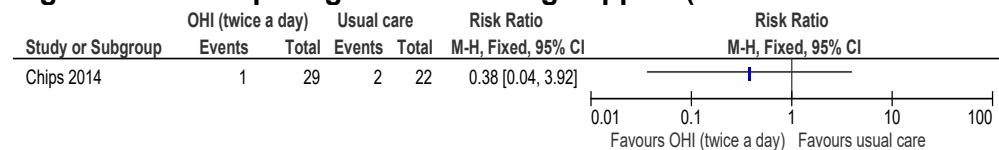
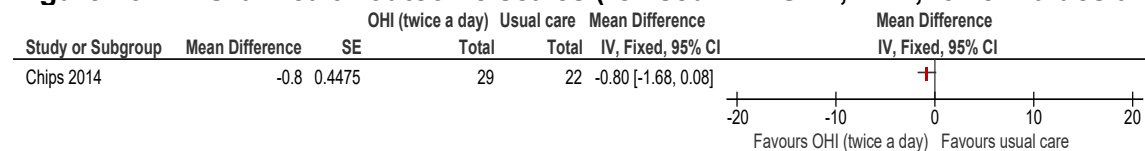


Figure 13: Oral health outcome scales (revised-THROAT, 7-21, lower values are better, final value) at ≤3 months



Notes: Baseline oral health intervention (twice a day): 10.8 (2.6). Baseline usual care: 12.2 (2.1).

Figure 14: Dysphagia severity (progression in FOIS from 4-5 to 6-7 at end of trial) at ≤3 months

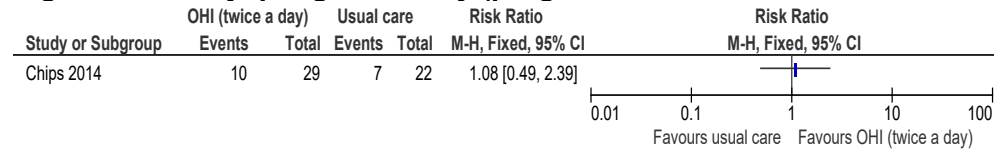
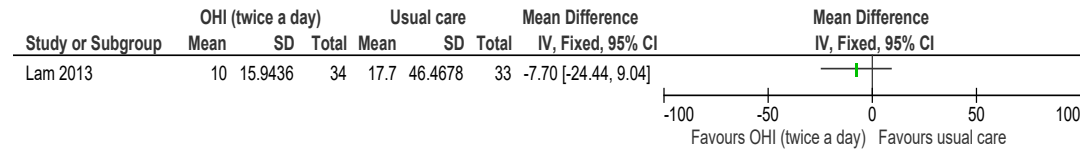


Figure 15: Presence of oral disease (gingivitis - gingival bleeding index, scale range unclear, lower values are better, final value) at ≤3 months



Notes: Baseline oral health intervention (twice a day). 18.8. Baseline usual care: 16.7.