



## Feingold Syndrome 1

Synonyms: Oculodigitoesophagoduodenal Syndrome, ODED Syndrome

Carlo LM Marcelis, MD<sup>1</sup> and Arjan PM de Brouwer, PhD<sup>2</sup>

Created: June 30, 2009; Updated: April 4, 2019.

### Summary

#### Clinical characteristics

Feingold syndrome 1 (referred to as FS1 in this *GeneReview*) is characterized by digital anomalies (shortening of the 2nd and 5th middle phalanx of the hand, clinodactyly of the 5th finger, syndactyly of toes 2-3 and/or 4-5, thumb hypoplasia), microcephaly, facial dysmorphism (short palpebral fissures and micrognathia), gastrointestinal atresias (primarily esophageal and/or duodenal), and mild-to-moderate learning disability.

#### Diagnosis/testing

The diagnosis of FS1 is established in a proband with suggestive clinical findings and a heterozygous pathogenic variant in *MYCN* identified by molecular genetic testing.

#### Management

*Treatment of manifestations:* Gastrointestinal atresia is treated surgically. Mild-to-moderate learning disabilities are treated in the usual manner.

#### Genetic counseling

FS1 is inherited in an autosomal dominant manner. Approximately 60% of individuals with Feingold syndrome 1 have an affected parent; the proportion of FS1 caused by a *de novo* *MYCN* pathogenic variant is unknown. Each child of an individual with FS1 has a 50% chance of inheriting the *MYCN* pathogenic variant. When the *MYCN* pathogenic variant has been identified in an affected family member, prenatal and preimplantation genetic testing are possible.

**Author Affiliations:** 1 Department of Human Genetics, Radboud University Nijmegen Medical Center, Nijmegen, The Netherlands; Email: [carlo.marcelis@radboudumc.nl](mailto:carlo.marcelis@radboudumc.nl). 2 Assistant Professor, Department of Human Genetics, Radboud University Nijmegen Medical Center, Nijmegen, The Netherlands; Email: [arjan.debrouwer@radboudumc.nl](mailto:arjan.debrouwer@radboudumc.nl).

## Diagnosis

### Suggestive Findings

Feingold syndrome 1 (FS1) **should be suspected** in probands with the following clinical findings [Marcelis et al 2008].

- Digital anomalies (brachymesophalangy, thumb hypoplasia, toe syndactyly)
- Microcephaly (occipito-frontal circumference <10th centile)
- Short palpebral fissures
- Gastrointestinal atresias, especially esophageal and duodenal, diagnosed pre- or postnatally by imaging studies (usually ultrasound examination, possibly MRI)

### Establishing the Diagnosis

The diagnosis of FS1 **is established** in a proband with suggestive clinical findings and a heterozygous pathogenic (or likely pathogenic) variant in *MYCN* identified by molecular genetic testing (see Table 1). Note: (1) Large contiguous-gene deletions encompassing *MYCN* and other genes have been reported in individuals with features of FS1 but more complex phenotypes (see Genetically Related Disorders). Of note, most individuals with these large deletions are identified by chromosomal microarray analysis (CMA) performed in the context of evaluation for multiple congenital anomalies. (2) Per ACMG/AMP variant interpretation guidelines, the terms "pathogenic variants" and "likely pathogenic variants" are synonymous in a clinical setting, meaning that both are considered diagnostic and both can be used for clinical decision making [Richards et al 2015]. Reference to "pathogenic variants" in this section is understood to include any likely pathogenic variants. (3) Identification of a heterozygous *MYCN* variant of uncertain significance does not establish or rule out the diagnosis.

**Molecular genetic testing** approaches can include a combination of **gene-targeted testing** (single-gene testing, multigene panel) and **comprehensive genomic testing** (chromosomal microarray analysis, exome sequencing, exome array, genome sequencing) depending on the phenotype.

Gene-targeted testing requires that the clinician determine which gene(s) are likely involved, whereas genomic testing does not. Individuals with the distinctive findings described in Suggestive Findings are likely to be diagnosed using gene-targeted testing (see Option 1), whereas those with atypical findings are more likely to be diagnosed using genomic testing (see Option 2).

### Option 1

When the phenotypic findings suggest the diagnosis of FS1, molecular genetic testing approaches can include **single-gene testing** or use of a **multigene panel**:

- **Single-gene testing.** Sequence analysis of *MYCN* detects small intragenic deletions/insertions and missense, nonsense, and splice site variants; typically, exon or whole-gene deletions/duplications are not detected. Perform sequence analysis first. If no pathogenic variant is found, perform gene-targeted deletion/duplication analysis to detect intragenic deletions or duplications.

Note: Gene-targeted methods will detect single-exon up to whole-gene deletions; however, breakpoints of large deletions and/or deletion of adjacent genes may not be determined.

- **An intellectual disability multigene panel** that includes *MYCN* and other genes of interest (see Differential Diagnosis) is most likely to identify the genetic cause of the condition while limiting identification of variants of uncertain significance and pathogenic variants in genes that do not explain the underlying phenotype. Note: (1) The genes included in the panel and the diagnostic sensitivity of the

testing used for each gene vary by laboratory and are likely to change over time. (2) Some multigene panels may include genes not associated with the condition discussed in this *GeneReview*. Of note, given the rarity of FS1, some panels for intellectual disability may not include this gene. (3) In some laboratories, panel options may include a custom laboratory-designed panel and/or custom phenotype-focused exome analysis that includes genes specified by the clinician. (4) Methods used in a panel may include sequence analysis, deletion/duplication analysis, and/or other non-sequencing-based tests. For this disorder a multigene panel that also includes deletion/duplication analysis is recommended (see Table 1).

For an introduction to multigene panels click [here](#). More detailed information for clinicians ordering genetic tests can be found [here](#).

## Option 2

When the diagnosis of FS1 is not considered because an individual has atypical phenotypic features, **comprehensive genomic testing** (which does not require the clinician to determine which gene[s] are likely involved) is an option. **Exome sequencing** is the most commonly used genomic testing method; **genome sequencing** is also possible. If exome sequencing is not diagnostic – and particularly when evidence supports autosomal dominant inheritance – **exome array** (when clinically available) may be considered to detect (multi)exon deletions or duplications that cannot be detected by sequence analysis.

For an introduction to comprehensive genomic testing click [here](#). More detailed information for clinicians ordering genomic testing can be found [here](#).

**Table 1.** Molecular Genetic Testing Used in Feingold Syndrome 1 (FS1)

Gene <sup>1</sup>	Method	Proportion of Probands with a Pathogenic Variant <sup>2</sup> Detectable by Method
MYCN	Sequence analysis <sup>3</sup>	59% <sup>4</sup>
	Gene-targeted deletion/duplication analysis <sup>5</sup>	9% <sup>6</sup>
	Chromosomal microarray (CMA) <sup>7</sup>	See footnote 8.

1. See Table A. Genes and Databases for chromosome locus and protein.

2. See Molecular Genetics for information on variants detected in this gene.

3. Sequence analysis detects variants that are benign, likely benign, of uncertain significance, likely pathogenic, or pathogenic. Variants may include small intragenic deletions/insertions and missense, nonsense, and splice site variants; typically, exon or whole-gene deletions/duplications are not detected. For issues to consider in interpretation of sequence analysis results, click [here](#).

4. van Bokhoven et al [2005], Blaumeiser et al [2008], Marcelis et al [2008], Cognet et al [2011]

5. Gene-targeted deletion/duplication analysis detects intragenic deletions or duplications. Methods used may include a range of techniques such as quantitative PCR, long-range PCR, multiplex ligation-dependent probe amplification (MLPA), and a gene-targeted microarray designed to detect single-exon deletions or duplications. Gene-targeted deletion/duplication testing will detect deletions ranging from a single exon to the whole gene; however, breakpoints of large deletions and/or deletion of adjacent genes (e.g., those described by van Bokhoven et al [2005], Blaumeiser et al [2008], Marcelis et al [2008], and Cognet et al [2011]) may not be detected by these methods.

6. van Bokhoven et al [2005], Marcelis et al [2008], Cognet et al [2011]

7. Chromosomal microarray analysis (CMA) uses oligonucleotide or SNP arrays to detect genome-wide large deletions/duplications (including MYCN) that cannot be detected by sequence analysis. The ability to determine the size of the deletion/duplication depends on the type of microarray used and the density of probes in the 2p24.3 region. CMA designs in current clinical use target the 2p24.3 region. Deletions reported in van Bokhoven et al [2005], Blaumeiser et al [2008], Marcelis et al [2008], and Cognet et al [2011] would be detected by CMA.

8. Larger deletions of MYCN and adjacent genes detected by CMA associated with features of FS1 with additional clinical findings are not included in this table (see Genetically Related Disorders).

## Clinical Characteristics

### Clinical Description

Feingold syndrome 1 (FS1) as described by Feingold [1975] and Brunner & Winter [1991] is characterized by digital anomalies, microcephaly, facial dysmorphism, gastrointestinal atresias, and learning disability. To date, 69 families with 116 affected individuals having three or more of the core features of FS1 (brachymesophalangy, toe syndactyly, microcephaly, short palpebral fissures, and intestinal atresia) have been reported [Blaumeiser et al 2008, Marcelis et al 2008, Cognet et al 2011].

Features are summarized in Table 2.

**Table 2.** Features in Feingold Syndrome 1 (FS1)

Feature		% of Persons w/Feature
<b>Digital anomalies</b>	Brachymesophalangy	100%
	Toe syndactyly	93%
	Thumb hypoplasia	17%
<b>Microcephaly</b>		86%
<b>Facial dysmorphism</b>	Short palpebral fissures	73%
	Micrognathia	30%
<b>Atresia</b>	Esophageal	35%
	Duodenal	27%
	Jejunal	3%
	Anal	2%
	Multiple	12%
<b>Mild learning deficit</b>		56%
<b>Stature &lt;10th centile</b>		60%
<b>Other</b>	Renal abnormalities	19%
	Cardiac abnormalities	15%
	Hearing loss	10%

Blaumeiser et al [2008], Marcelis et al [2008], Cognet et al [2011]

Digital anomalies include brachymesophalangy (shortening of the 2nd and 5th middle phalanx of the hand with clinodactyly of the 5th finger) and thumb hypoplasia (Figures 1 and 2). Toe syndactyly refers to syndactyly of toes 2-3 and/or 4-5 (Figure 3).

Gastrointestinal atresia (esophageal and/or duodenal) is a cause of major medical concern in FS1 and requires immediate surgical intervention (see Management).

Mild learning deficit is frequent in FS1; most affected individuals are able to live an independent life. Clear intellectual disability is rare, but intelligence is below average when compared to the general population and healthy, unaffected family members.

Some reports show that growth is impaired in FS1 [Shaw-Smith et al 2005]. Short stature (height <3rd centile) is uncommon but average height is below that in the general population.

Associated features that occur in fewer than 50% of affected individuals include the following:

- **Renal abnormalities.** Horseshoe kidneys, dysplastic kidneys, hydronephrosis and pelvic dilatation, chronic nephritis, and vesicourethral reflux leading to renal dysplasia and renal failure
- **Cardiac abnormalities.** Patent ductus arteriosus, multiple ventricular septal defects (VSD), tricuspid valve stenosis and VSD plus tricuspid atresia, and interrupted aortic arch
- **Hearing loss.** Variable and can include conductive and sensorineural hearing loss; the latter is more commonly reported

## Genotype-Phenotype Correlations

No significant differences are observed among individuals with deletions or missense, nonsense, or frameshift variants.

## Penetrance

The penetrance for major features of FS1, especially digital abnormalities, appears to be 100% but clinical expression can vary considerably.

## Nomenclature

Terms used in the past for Feingold syndrome 1:

- Microcephaly-oculo-digito-esophageal-duodenal syndrome
- Microcephaly mesobrachyphalangy tracheoesophageal fistula syndrome
- Microcephaly-digital anomalies-normal intelligence syndrome

## Prevalence

Prevalence is unknown; FS1 is likely rare. To date, 69 families with 116 affected individuals have been reported [Blaumeiser et al 2008, Marcelis et al 2008, Cognet et al 2011].

## Genetically Related (Allelic) Disorders

The *de novo* germline *MYCN* gain-of-function pathogenic missense variant p.(Thr58Met) was reported in an individual with megalencephaly, ventriculomegaly, hypoplastic corpus callosum, intellectual disability, polydactyly, and neuroblastoma [Kato et al 2019].

Contiguous gene deletions involving *MYCN* and adjacent genes are relatively common and typically associated with phenotypic findings of FS1 as well as additional findings. To date, nine such individuals have been described [Celli et al 2000, Chen et al 2012, Hempel et al 2016, Burnside et al 2018].

## Differential Diagnosis

**Table 3.** Other Genes of Interest in the Differential Diagnosis of Feingold Syndrome 1 (FS1)

Gene(s)	Disorder	MOI	Clinical Features of Differential Diagnosis Disorder	
			Overlapping w/FS1	Distinguishing from FS1
<i>CHD7</i>	<a href="#">CHARGE syndrome</a>	AD	<ul style="list-style-type: none"> <li>• Esophageal atresia</li> <li>• Heart defects</li> <li>• Renal abnormalities</li> </ul>	<ul style="list-style-type: none"> <li>• Coloboma</li> <li>• Genital abnormalities</li> <li>• Ear anomalies</li> </ul>



**Figure 1.** Typical brachymesophalangy in an adult with FS1

Table 3. continued from previous page.

Gene(s)	Disorder	MOI	Clinical Features of Differential Diagnosis Disorder	
			Overlapping w/FS1	Distinguishing from FS1
<i>MIR17HG</i> <sup>1</sup>	Feingold syndrome 2 (OMIM 614326)	AD	<ul style="list-style-type: none"> <li>• Microcephaly</li> <li>• Mild growth delay</li> <li>• Brachymesophalangy, toe syndactyly, &amp; thumb hypoplasia</li> <li>• Learning disabilities</li> </ul>	Absence of gastrointestinal abnormalities <sup>2</sup>
21 genes <sup>3</sup>	Fanconi anemia	AR AD XL	<ul style="list-style-type: none"> <li>• Thumb hypoplasia</li> <li>• Microcephaly</li> <li>• Growth restriction</li> <li>• Intestinal/anal atresia</li> <li>• Renal abnormalities</li> </ul>	<ul style="list-style-type: none"> <li>• Absence of brachymesophalangy / toe syndactyly</li> <li>• ↑ tumor risk (not found in FS1)</li> </ul>

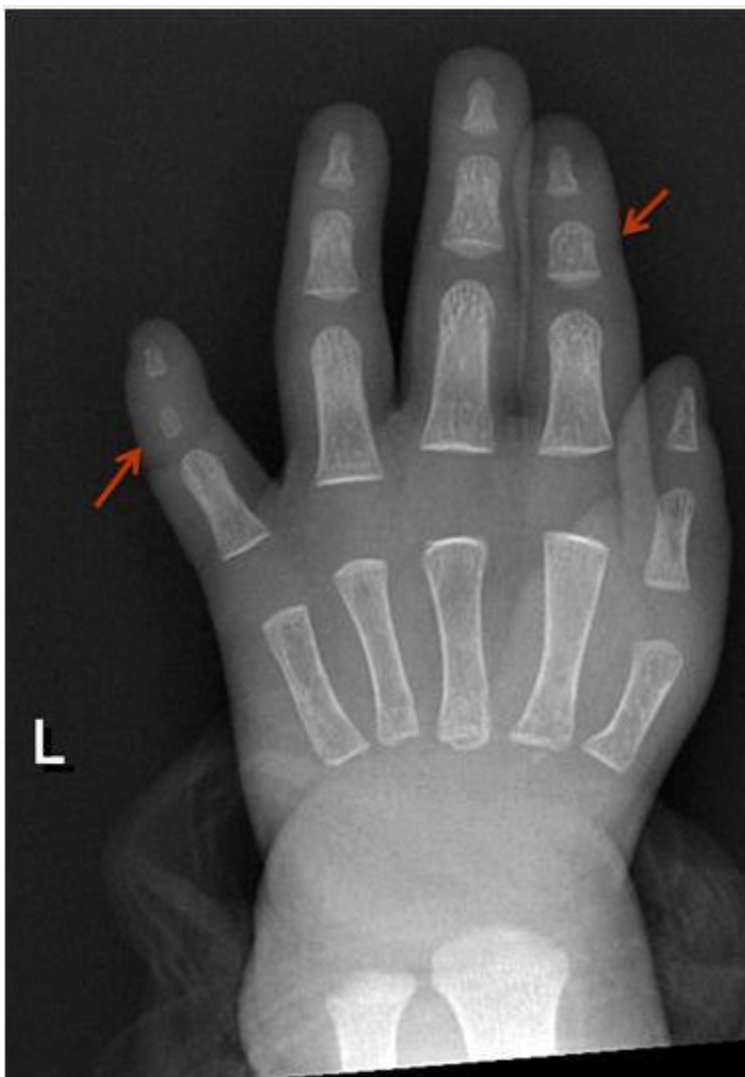
AD = autosomal dominant; AR = autosomal recessive; MOI = mode of inheritance; XL = X-linked

1. Feingold syndrome 2 is caused by hemizygous deletions of chromosome 13q31.3 including *MIR17HG* [Tassano et al 2013].

2. To date, seven individuals with Feingold syndrome 2 have been described [de Pontual et al 2011, Ganjavi et al 2014, Muriello et al 2019].

3. *BRCA2, BRIP1, ERCC4, FANCA, FANCB, FANCC, FANCD2, FANCE, FANCF, FANCG, FANCI, FANCL, FANCM, MAD2L2, PALB2, RAD51, RAD51C, RFW3, SLX4, UBE2T, XRCC2*

**VACTERL association** (vertebral defects, anal atresia, cardiac defects, tracheoesophageal fistula with esophageal atresia, renal and limb abnormalities) shows considerable overlap with FS1, but the two should be



**Figure 2.** X-ray showing typical brachymesophalangy (digits 2 and 5) and thumb hypoplasia

distinguishable by the presence of microcephaly, brachymesophalangy, and toe syndactyly in FS1. The molecular basis of VACTERL association is unknown.

The brachymesophalangy observed in FS1 is very similar to brachydactyly type A4 (BDA4). The molecular basis of BDA4 is known. Although no pathogenic variants in *MYCN* have been identified in BDA4, molecular genetic testing of *MYCN* could be considered in families with BDA4.

## Management

### Evaluations Following Initial Diagnosis

To establish the extent of disease and needs in an individual diagnosed with Feingold syndrome 1 (FS1), the evaluations summarized in Table 4 (if not performed as part of the evaluation that led to the diagnosis) are recommended.



**Figure 3.** Typical syndactyly of 2nd and 3rd or 4th and 5th toe

**Table 4.** Recommended Evaluations Following Initial Diagnosis in Individuals with Feingold Syndrome 1 (FS1)

System/Concern	Evaluation	Comment
<b>Hands/Feet</b>	Assess for digital anomalies.	<ul style="list-style-type: none"> <li>• Hand surgeon</li> <li>• Occupational therapy to assess hand function / need for therapy</li> <li>• Foot specialist to assess for functional needs</li> </ul>
<b>Gastrointestinal tract</b>	Assess for gastrointestinal atresia (incl esophageal, duodenal, jejunal, anal).	Gastroenterologist / GI surgeon
<b>Development</b>	Developmental assessment	Incl eval of motor, speech-language, general cognitive, & vocational skills
<b>Renal abnormalities</b>	Renal ultrasound eval	Assess for renal anomalies.
<b>Cardiac abnormalities</b>	Assess for congenital heart defects.	Pediatric cardiologist
<b>Hearing loss</b>	Audiologic eval <sup>1</sup>	Conductive & sensorineural
<b>Miscellaneous</b>	Consultation w/clinical geneticist &/or genetic counselor	

1. See [Hereditary Hearing Loss and Deafness Overview](#) for details about audiologic evaluations.



## Treatment of Manifestations

Appropriate treatment includes a multidisciplinary approach to address the following possible concerns:

- Surgical treatment of gastrointestinal atresia
- Occupational therapy / surgical intervention for finger/toe anomalies
- Treatment of cardiac and/or renal anomalies as per standard practice
- Treatment for significant hearing loss (See [Hereditary Hearing Loss and Deafness Overview](#).)
- Developmental or educational intervention for children with learning difficulties

## Developmental Delay / Intellectual Disability Management Issues

The following information represents typical management recommendations for individuals with developmental delay / intellectual disability in the United States (US); standard recommendations may vary from country to country.

**Ages 0-3 years.** Referral to an early intervention program is recommended for access to occupational, physical, speech, and feeding therapy as well as infant mental health services, special educators, and sensory impairment specialists. In the US, early intervention is a federally funded program available in all states and provides in-home services to target individual therapy needs.

**Ages 3-5 years.** In the US, developmental preschool through the local public school district is recommended. Before placement, an evaluation is made to determine needed services and therapies and an individualized education plan (IEP) is developed for those who qualify based on established motor, language, social, or cognitive delay. The early intervention program typically assists with this transition. Developmental preschool is center-based; however, for children too medically unstable to attend, home-based services are provided.

**All ages.** Consultation with a developmental pediatrician is recommended to ensure the involvement of appropriate community, state, and educational agencies and to support parents in maximizing quality of life. Some issues to consider:

- **IEP services** are for those who require specially designed instruction / related services.
  - IEP services will be reviewed annually to determine if any changes are needed.
  - As required by special education law, children should be in the least restrictive environment at school and included in general education as much as possible and when appropriate.
  - Vision and hearing consultants should be a part of the child's IEP team to support access to academic material.
  - PT, OT, and speech services will be provided in the IEP to the extent that the need affects the child's access to academic material. Beyond that, private supportive therapies based on the affected individual's needs may be considered. Specific recommendations regarding type of therapy can be made by a developmental pediatrician.
  - As a child enters teen years, a transition plan should be discussed and incorporated in the IEP. For those receiving IEP services, the public school district is required to provide services until age 21.
- **A 504 plan** (Section 504: a US federal statute that prohibits discrimination based on disability) can be considered for those who require accommodations or modifications such as front-of-class seating, assistive technology devices, classroom scribes, extra time between classes, modified assignments, and enlarged text.
- In the US:
  - Developmental Disabilities Administration (DDA) enrollment is recommended. DDA is a public agency that provides services and support to qualified individuals. Eligibility differs by state but is typically determined by diagnosis and/or associated cognitive/adaptive disabilities.

- Families with limited income and resources may also qualify for supplemental security income (SSI) for their child with a disability.

## Surveillance

**Table 5.** Recommended Surveillance for Individuals with Feingold Syndrome 1

System/Concern	Evaluation	Frequency
<b>Hands/Feet</b>	Hand function / need for OT	Per OT
<b>GI tract atresia</b>	As specified by GI consultants	Per GI consultants
<b>Development/ Education</b>	Monitor developmental progress & educational needs.	Routinely, per developmental pediatrician &/or school
<b>Renal</b>	As specified by renal consultants	Per renal consultants
<b>Cardiac</b>	As specified by cardiac consultants	Per cardiologist
<b>Hearing</b>	Audiologic reexamination to determine type & extent of hearing loss & success w/hearing habilitation	Per treating audiologist

GI = gastrointestinal; OT = occupational therapist/therapy

## Evaluation of Relatives at Risk

See Genetic Counseling for issues related to testing of at-risk relatives for genetic counseling purposes.

## Therapies Under Investigation

Search [ClinicalTrials.gov](https://clinicaltrials.gov) in the US and [EU Clinical Trials Register](https://clinicaltrialsregister.eu) in Europe for information on clinical studies for a wide range of diseases and conditions. Note: There may not be clinical trials for this disorder.

## Genetic Counseling

*Genetic counseling is the process of providing individuals and families with information on the nature, mode(s) of inheritance, and implications of genetic disorders to help them make informed medical and personal decisions. The following section deals with genetic risk assessment and the use of family history and genetic testing to clarify genetic status for family members; it is not meant to address all personal, cultural, or ethical issues that may arise or to substitute for consultation with a genetics professional. —ED.*

## Mode of Inheritance

Feingold syndrome 1 (FS1) is inherited in an autosomal dominant manner.

## Risk to Family Members

### Parents of a proband

- Many individuals (~60%) diagnosed with FS1 have an affected parent.
- A proband with FS1 may have the disorder as the result of a *de novo* MYCN pathogenic variant. *De novo* pathogenic variants were observed in approximately 40% of individuals with FS1 [Marcelis et al 2008; Author, personal communication].
- Molecular genetic testing is recommended for the parents of a proband with an apparent *de novo* pathogenic variant.
- If the pathogenic variant found in the proband cannot be detected in the leukocyte DNA of either parent, possible explanations include a *de novo* pathogenic variant in the proband or germline mosaicism in a parent. Though theoretically possible, no instances of germline mosaicism have been reported.

- The family history of some individuals diagnosed with FS1 may appear to be negative because of failure to recognize the disorder in a family member with a milder phenotypic presentation. Therefore, an apparently negative family history cannot be confirmed until appropriate evaluations and/or molecular genetic testing have been performed.
- Note: If the parent is the family member in whom the pathogenic variant first occurred, the parent may have somatic mosaicism for the pathogenic variant and may be mildly/minimally affected.

**Sibs of a proband.** The risk to the sibs of the proband depends on the clinical/genetic status of the proband's parents.

- If a parent of the proband is affected and/or known to have the *MYCN* pathogenic variant identified in the proband, the risk to the sibs is 50%.
- If the proband has a known pathogenic variant that cannot be detected in the leukocyte DNA of either parent, the recurrence risk to sibs is estimated to be 1% because of the theoretic possibility of parental germline mosaicism [Rahbari et al 2016].
- If the parents have not been tested for the *MYCN* pathogenic variant but are clinically unaffected, the risk to the sibs of a proband appears to be low. However, sibs of a proband with clinically unaffected parents are still presumed to be at increased risk for FS1 because of the theoretic possibility of parental germline mosaicism.

**Offspring of a proband.** Each child of an individual with FS1 has a 50% chance of inheriting the *MYCN* pathogenic variant.

**Other family members.** The risk to other family members depends on the status of the proband's parents: if a parent has the *MYCN* pathogenic variant, the parent's family members may be at risk.

## Related Genetic Counseling Issues

**Considerations in families with an apparent *de novo* pathogenic variant.** When neither parent of a proband with an autosomal dominant condition has the pathogenic variant identified in the proband or clinical evidence of the disorder, the pathogenic variant is likely *de novo*. However, non-medical explanations including alternate paternity or maternity (e.g., with assisted reproduction) and undisclosed adoption could also be explored.

### Family planning

- The optimal time for determination of genetic risk and discussion of the availability of prenatal/preimplantation genetic testing is before pregnancy.
- It is appropriate to offer genetic counseling (including discussion of potential risks to offspring and reproductive options) to young adults who are affected or at risk.

**DNA banking.** Because it is likely that testing methodology and our understanding of genes, pathogenic mechanisms, and diseases will improve in the future, consideration should be given to banking DNA from probands in whom a molecular diagnosis has not been confirmed (i.e., the causative pathogenic mechanism is unknown). For more information, see Huang et al [2022].

## Prenatal Testing and Preimplantation Genetic Testing

Once the *MYCN* pathogenic variant has been identified in an affected family member, prenatal and preimplantation genetic testing are possible.

Because of the risk for major congenital abnormalities of the gastrointestinal tract, heart, and kidney, high-resolution ultrasound investigations (including fetal echocardiogram) are advised in any pregnancy in which the

fetus is known to have an *MYCN* pathogenic variant or in which the genetic status of a fetus at 50% risk is unknown.

Differences in perspective may exist among medical professionals and within families regarding the use of prenatal testing, particularly if the testing is being considered for the purpose of pregnancy termination rather than early diagnosis. While most centers would consider use of prenatal testing to be a personal decision, discussion of these issues may be helpful.

## Resources

*GeneReviews staff has selected the following disease-specific and/or umbrella support organizations and/or registries for the benefit of individuals with this disorder and their families. GeneReviews is not responsible for the information provided by other organizations. For information on selection criteria, click [here](#).*

- **Children's Craniofacial Association**

**Phone:** 800-535-3643

**Email:** [contactCCA@ccakids.com](mailto:contactCCA@ccakids.com)

[www.ccakids.org](http://www.ccakids.org)

- **Face Equality International**

United Kingdom

[faceequalityinternational.org](http://faceequalityinternational.org)

- **Learning Disabilities Association of America**

4156 Library Road

Pittsburgh PA 15234-1349

**Phone:** 412-341-1515

**Fax:** 412-344-0224

[www.ldaamerica.org](http://www.ldaamerica.org)

- **Medline Plus**

[Esophageal atresia](#)

- **REACH**

*Helping children with upper limb differences live life without limits.*

United Kingdom

**Phone:** 0845 1306 225; 020 3478 0100

[www.reach.org.uk](http://www.reach.org.uk)

## Molecular Genetics

*Information in the Molecular Genetics and OMIM tables may differ from that elsewhere in the GeneReview: tables may contain more recent information. —ED.*

**Table A.** Feingold Syndrome 1: Genes and Databases

Gene	Chromosome Locus	Protein	HGMD	ClinVar
------	------------------	---------	------	---------

Table A. continued from previous page.

MYCN	2p24.3	N-myc proto-oncogene protein	MYCN	MYCN
------	--------	------------------------------	------	------

Data are compiled from the following standard references: gene from [HGNC](#); chromosome locus from [OMIM](#); protein from [UniProt](#). For a description of databases (Locus Specific, HGMD, ClinVar) to which links are provided, click [here](#).

Table B. OMIM Entries for Feingold Syndrome 1 ([View All in OMIM](#))

164280	FEINGOLD SYNDROME 1; FGLDS1
164840	MYCN PROTOONCOGENE, bHLH TRANSCRIPTION FACTOR; MYCN

## Molecular Pathogenesis

The Myc family of proteins is well known for its role in oncogenic processes. Members of this family include c-Myc, N-Myc, and L-Myc. The gene *N-myc* was identified by homology with *c-Myc* in amplified sequences of neuroblastomas.

c-Myc and N-Myc also play a crucial role in development. Mice deficient for either of these Myc genes die before embryonic day 11.5. Inactivation of murine *N-myc* demonstrates its developmental importance [Charron et al 2002, Knoepfler et al 2002, Ota et al 2007]. *N-myc* plays a role in branching morphogenesis in the lung and development of the mesonephric tubules, neuroepithelium, sensory ganglia, gut, heart, and limb, many of which are also affected in FS1.

**Mechanism of disease causation.** Feingold syndrome 1 is caused by a loss-of-function variant resulting in haploinsufficiency of *MYCN*.

**MYCN-specific laboratory considerations.** *MYCN* encodes three exons. Although exon 1 contains a potential translation start codon, initiation of MYCN protein synthesis commences at the first ATG codon in exon 2 because of an internal ribosome entry site in the 5'-untranslated region [Jopling & Willis 2001]. A missense nucleotide change in exon 1, which introduced a termination codon, was determined to be benign [Marcelis et al 2008]. The effect of this variant on alternative transcripts and their role in pathogenesis of FS1 is unknown.

Table 6. Notable MYCN Variants

Reference Sequences	DNA Nucleotide Change	Predicted Protein Change	Comment
<a href="#">NM_001293231.1</a> <a href="#">NP_001280160.1</a>	c.64C>T	p.Gln22Ter	Benign variant <sup>1</sup>
<a href="#">NM_005378.4</a> <a href="#">NP_005369.2</a>	c.964C>T	p.Arg322Ter	Recurrent pathogenic variants <sup>1</sup>
	c.1105_1106dupAG	p.Ser369ArgfsTer3	
	c.1117C>T	p.Arg373Ter	
	c.1178G>A	p.Arg393His	
	c.1181G>A	p.Arg394His	

Variants listed in the table have been provided by the authors. *GeneReviews* staff have not independently verified the classification of variants.

*GeneReviews* follows the standard naming conventions of the Human Genome Variation Society ([varnomen.hgvs.org](#)). See [Quick Reference](#) for an explanation of nomenclature.

1. Marcelis et al [2008]

## Cancer and Benign Tumors

Somatic amplification of *MYCN* is found in up to 25% of a diverse range of cancers, such as neuroblastoma and skin, lung, and prostate cancer. This invariably leads to overexpression of *MYCN* resulting in a poor prognosis [Ruiz-Pérez et al 2017]. This is in sharp contrast to the variants causing FS1, which are germline variants that without exception result in a loss of function.

## Chapter Notes

### Revision History

- 4 April 2019 (bp) Comprehensive update posted live
- 6 September 2012 (me) Comprehensive update posted live
- 30 June 2009 (me) Review posted live
- 23 April 2009 (cm) Original submission

## References

### Literature Cited

- Blaumeiser B, Oehl-Jaschkowitz B, Borozdin W, Kohlhase J. Feingold syndrome associated with two novel *MYCN* mutations in sporadic and familial cases including monozygotic twins. *Am J Med Genet.* 2008;146A:2304–7. PubMed PMID: 18671284.
- Brunner HG, Winter RM. Autosomal dominant inheritance of abnormalities of the hands and feet with short palpebral fissures, variable microcephaly with learning disability, and oesophageal/duodenal atresia. *J Med Genet.* 1991;28:389–94. PubMed PMID: 1870095.
- Burnside RD, Molinari S, Botti C, Brooks SS, Chung WK, Mehta L, Schwartz S, Papenhausen P. Features of Feingold syndrome 1 dominate in subjects with 2p deletions including *MYCN*. *Am J Med Genet A.* 2018;176:1956–63. PubMed PMID: 30088856.
- Celli J, van Beusekom E, Hennekam RC, Gallardo ME, Smeets DF, de Córdoba SR, Innis JW, Frydman M, König R, Kingston H, Tolmie J, Govaerts LC, van Bokhoven H, Brunner HG. Familial syndromic esophageal atresia maps to 2p23–p24. *Am J Hum Genet.* 2000;66:436–44. PubMed PMID: 10677303.
- Charron J, Gagnon JF, Cadrin-Girard JF. Identification of N-myc regulatory regions involved in embryonic expression. *Pediatr Res.* 2002;51:48–56. PubMed PMID: 11756639.
- Chen CP, Lin SP, Chern SR, Wu PS, Chang SD, Ng SH, Liu YP, Su JW, Wang W. A de novo 4.4-Mb microdeletion in 2p24.3 → p24.2 in a girl with bilateral hearing impairment, microcephaly, digit abnormalities and Feingold syndrome. *Eur J Med Genet.* 2012;55:666–9. PubMed PMID: 22842076.
- Cognet M, Nougayrede A, Malan V, Callier P, Cretolle C, Faivre L, Genevieve D, Goldenberg A, Heron D, Mercier S, Philip N, Sigaudy S, Verloes A, Sarnacki S, Munnich A, Vekemans M, Lyonnet S, Etchevers H, Amiel J, de Pontual L. Dissection of the *MYCN* locus in Feingold syndrome and isolated oesophageal atresia. *Eur J Hum Genet.* 2011;19:602–6. PubMed PMID: 21224895.
- de Pontual L, Yao E, Callier P, Faivre L, Drouin V, Cariou S, van Haeringen A, Genevieve D, Goldenberg A, Oufadem M, Manouvrier S, Munnich A, Vidigal JA, Vekemans M, Lyonnet S, Henrion-Caude A, Ventura A, Amiel J. Germline deletion of the miR-17-92 cluster causes growth and skeletal defects in humans. *Nat Genet.* 2011;43:1026–30. PubMed PMID: 21892160.
- Feingold M. Case Report 30. *Synd Ident.* 1975;3:16–7.

- Ganjavi H, Siu VM, Speevak M, MacDonald PA. A fourth case of Feingold syndrome type 2: psychiatric presentation and management. *BMJ Case Rep.* 2014;2014.
- Hempel A, Pagnamenta AT, Blyth M, Mansour S, McConnell V, Kou I, Ikegawa S, Tsurusaki Y, Matsumoto N, Lo-Castro A, Plessis G, Albrecht B, Battaglia A, Taylor JC, Howard MF, Keays D, Sohal AS, Kühl SJ, Kini U, McNeill A, et al. Deletions and de novo mutations of SOX11 are associated with a neurodevelopmental disorder with features of Coffin-Siris syndrome. *J Med Genet.* 2016;53:152–62. PubMed PMID: 26543203.
- Huang SJ, Amendola LM, Sternen DL. Variation among DNA banking consent forms: points for clinicians to bank on. *J Community Genet.* 2022;13:389–97. PubMed PMID: 35834113.
- Jopling CL, Willis AE. N-myc translation is initiated via an internal ribosome entry segment that displays enhanced activity in neuronal cells. *Oncogene.* 2001;20:2664–70. PubMed PMID: 11420678.
- Kato K, Miya F, Hamada N, Negishi Y, Narumi-Kishimoto Y, Ozawa H, Ito H, Hori I, Hattori A, Okamoto N, Kato M, Tsunoda T, Kanemura Y, Kosaki K, Takahashi Y, Nagata KI, Saitoh S. *MYCN* de novo gain-of-function mutation in a patient with a novel megalencephaly syndrome. *J Med Genet.* 2019;56:388–95. PubMed PMID: 30573562.
- Knoepfler PS, Cheng PF, Eisenman RN. N-myc is essential during neurogenesis for the rapid expansion of progenitor cell populations and the inhibition of neuronal differentiation. *Genes Dev.* 2002;16:2699–712. PubMed PMID: 12381668.
- Marcelis CLM, Hol FA, Graham GE, Rieu PNMA, Kellermayer R, Meijer RPP, Lugtenberg D, Scheffer H, van Bokhoven H, Brunner HG, de Brouwer APM. Genotype-phenotype correlations in MYCN-related Feingold syndrome. *Hum Mutat.* 2008;29:1125–32. PubMed PMID: 18470948.
- Muriello M, Kim AY, Sondergaard Schatz K, Beck N, Gunay-Aygun M, Hoover-Fong JE. Growth hormone deficiency, aortic dilation, and neurocognitive issues in Feingold syndrome 2. *Am J Med Genet A.* 2019;179:410–6. PubMed PMID: 30672094.
- Ota S, Zhou ZQ, Keene DR, Knoepfler P, Hurlin PJ. Activities of N-Myc in the developing limb link control of skeletal size with digit separation. *Development.* 2007;134:1583–92. PubMed PMID: 17360777.
- Rahbari R, Wuster A, Lindsay SJ, Hardwick RJ, Alexandrov LB, Turki SA, Dominiczak A, Morris A, Porteous D, Smith B, Stratton MR, Hurles ME, et al. Timing, rates and spectra of human germline mutation. *Nat Genet.* 2016;48:126–33. PubMed PMID: 26656846.
- Richards S, Aziz N, Bale S, Bick D, Das S, Gastier-Foster J, Grody WW, Hegde M, Lyon E, Spector E, Voelkerding K, Rehm HL, et al. Standards and guidelines for the interpretation of sequence variants: a joint consensus recommendation of the American College of Medical Genetics and Genomics and the Association for Molecular Pathology. *Genet Med.* 2015;17:405–24. PubMed PMID: 25741868.
- Ruiz-Pérez MV, Henley AB, Arsenian-Henriksson M. The MYCN protein in health and disease. *Genes (Basel).* 2017;8:E113. pii.
- Shaw-Smith C, Willatt L, Thalange N. Growth deficiency in oculodigitoesophagoduodenal (Feingold) syndrome--case report and review of the literature. *Clin Dysmorphol.* 2005;14:155–8. PubMed PMID: 15930908.
- Tassano E, Di Rocco M, Signa S, Gimelli G. De novo 13q31.1-q32.1 interstitial deletion encompassing the miR-17-92 cluster in a patient with Feingold syndrome-2. *Am J Med Genet A.* 2013;161A:894–6. PubMed PMID: 23495052.
- van Bokhoven H, Celli J, van Reeuwijk J, Rinne T, Glaudemans B, van Beusekom E, Rieu P, Newbury-Ecob RA, Chiang C, Brunner HG. MYCN haploinsufficiency is associated with reduced brain size and intestinal atresias in Feingold syndrome. *Nat Genet.* 2005;37:465–7. PubMed PMID: 15821734.

## License

GeneReviews® chapters are owned by the University of Washington. Permission is hereby granted to reproduce, distribute, and translate copies of content materials for noncommercial research purposes only, provided that (i) credit for source (<http://www.genereviews.org/>) and copyright (© 1993-2024 University of Washington) are included with each copy; (ii) a link to the original material is provided whenever the material is published elsewhere on the Web; and (iii) reproducers, distributors, and/or translators comply with the [GeneReviews® Copyright Notice and Usage Disclaimer](#). No further modifications are allowed. For clarity, excerpts of GeneReviews chapters for use in lab reports and clinic notes are a permitted use.

For more information, see the [GeneReviews® Copyright Notice and Usage Disclaimer](#).

For questions regarding permissions or whether a specified use is allowed, contact: [admasst@uw.edu](mailto:admasst@uw.edu).